

FoxO1 (phospho Ser319) Polyclonal Antibody

Catalog_no :	AP0114
Applications :	WB,IHC-p,ELISA
Reactivity :	Human,Mouse,Rat
Category :	抗原抗体
Size :	100µg/50µg/20µg
Gene_name :	FOXO1
Protein_name :	Forkhead box protein O1
Humangene_id :	2308
Humanswissprot_no :	Q12778
Mousegene_id :	56458
Mouseswissprot_no :	Q9R1E0
Ratgene_id :	84482
Ratswissprot_no :	G3V7R4
Immunogen :	The antiserum was produced against synthesized peptide derived from human FKHR around the phosphorylation site of Ser319. AA range:286-335
Specificity :	Phospho-FoxO1 (S319) Polyclonal Antibody detects endogenous levels of FoxO1 protein only when phosphorylated at S319.
Formulation :	Liquid in PBS containing 50% glycerol, 0.5% BSA and 0.02% sodium azide.
Source :	Rabbit
Dilution :	Western Blot: 1/500 - 1/2000. Immunohistochemistry: 1/100 - 1/300. ELISA: 1/10000. Not yet tested in other applications.
Purification :	The antibody was affinity-purified from rabbit antiserum by affinity-chromatography using epitope-specific immunogen.
Concentration :	1 mg/ml
Storage_stability :	-20°C/1 year

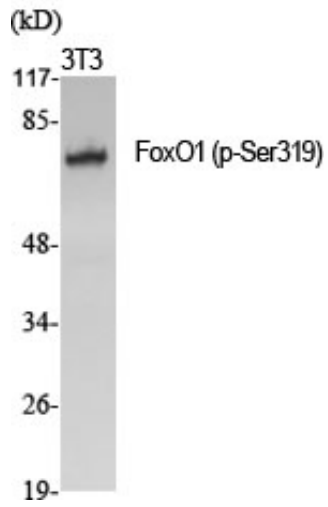


MsdS : [MSDS_Antibody.pdf](#)

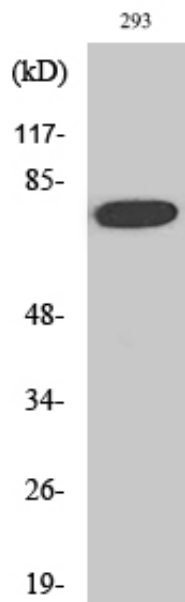
Other_name : FOXO1; FKHR; FOXO1A; Forkhead box protein O1; Forkhead box protein O1A; Forkhead in rhabdomyosarcoma

Molecular Weight : 82KD

Product Images



Western Blot analysis of various cells using Phospho-FoxO1 (S319) Polyclonal Antibody



Western Blot analysis of 293 cells using Phospho-FoxO1 (S319) Polyclonal Antibody