

## G3BP1 (phospho Ser232) Polyclonal Antibody

Catalog_no :	AP0117
Applications :	WB,IHC-p,ELISA
Reactivity :	Human,Mouse
Category :	抗原抗体
Size :	100µg/50µg/20µg
Gene_name :	G3BP1
Protein_name :	Ras GTPase-activating protein-binding protein 1
Humangene_id :	<a href="#">10146</a>
Humanswissprot_no :	<a href="#">Q13283</a>
Mousegene_id :	<a href="#">27041</a>
Mouseswissprot_no :	<a href="#">P97855</a>
Immunogen :	The antiserum was produced against synthesized peptide derived from human G3BP-1 around the phosphorylation site of Ser232. AA range:216-248
Specificity :	Phospho-G3BP1 (S232) Polyclonal Antibody detects endogenous levels of G3BP1 protein only when phosphorylated at S232.
Formulation :	Liquid in PBS containing 50% glycerol, 0.5% BSA and 0.02% sodium azide.
Source :	Rabbit
Dilution :	Western Blot: 1/500 - 1/2000. Immunohistochemistry: 1/100 - 1/300. ELISA: 1/5000. Not yet tested in other applications.
Purification :	The antibody was affinity-purified from rabbit antiserum by affinity-chromatography using epitope-specific immunogen.
Concentration :	1 mg/ml
Storage_stability :	-20°C/1 year
Msds :	<a href="#">MSDS_Antibody.pdf</a>
Other_name :	G3BP1; G3BP; Ras GTPase-activating protein-binding protein 1; G3BP-1; ATP-dependent DNA helicase VIII; hDH VIII; GAP SH3 domain-binding protein 1

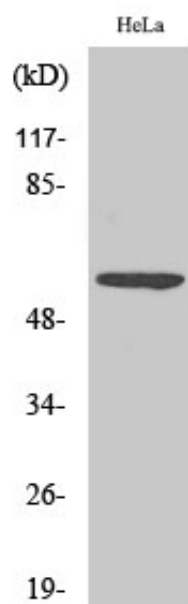


Molecular  
Weight :

52KD

---

## Product Images



Western Blot analysis of various cells using Phospho-G3BP1 (S232) Polyclonal Antibody