

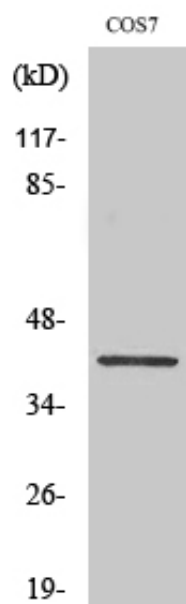
## GATA-1 (phospho Ser310) Polyclonal Antibody

Catalog_no :	AP0120
Applications :	WB,ELISA
Reactivity :	Human,Mouse,Rat,Monkey
Category :	抗原抗体
Size :	100µg/50µg/20µg
Gene_name :	GATA1
Protein_name :	Erythroid transcription factor
Humangene_id :	<a href="#">2623</a>
Humanswissprot_no :	<a href="#">P15976</a>
Mousegene_id :	<a href="#">14460</a>
Mouseswissprot_no :	<a href="#">P17679</a>
Ratgene_id :	<a href="#">1.00911e+008</a>
Ratswissprot_no :	<a href="#">P43429</a>
Immunogen :	The antiserum was produced against synthesized peptide derived from human GATA1 around the phosphorylation site of Ser310. AA range:277-326
Specificity :	Phospho-GATA-1 (S310) Polyclonal Antibody detects endogenous levels of GATA-1 protein only when phosphorylated at S310.
Formulation :	Liquid in PBS containing 50% glycerol, 0.5% BSA and 0.02% sodium azide.
Source :	Rabbit
Dilution :	Western Blot: 1/500 - 1/2000. ELISA: 1/20000. Not yet tested in other applications.
Purification :	The antibody was affinity-purified from rabbit antiserum by affinity-chromatography using epitope-specific immunogen.
Concentration :	1 mg/ml
Storage_stability :	-20°C/1 year
Msds :	MSDS_Antibody.pdf



Other\_name : GATA1; ERYF1; GF1; Erythroid transcription factor; Eryf1; GATA-binding factor 1; GATA-1; GF-1; NF-E1 DNA-binding protein

## Product Images



Western Blot analysis of various cells using Phospho-GATA-1 (S310) Polyclonal Antibody diluted at 1 : 500 cells nucleus extracted by Minute TM Cytoplasmic and Nuclear Fractionation kit (SC-003, Invent biotech, MN, USA).