

## GRF-1 (phospho Tyr1087) Polyclonal Antibody

Catalog_no :	AP0121
Applications :	WB,ELISA
Reactivity :	Human,Mouse,Rat
Category :	抗原抗体
Size :	100µg/50µg/20µg
Gene_name :	ARHGAP35
Protein_name :	Rho GTPase-activating protein 35
Humangene_id	<a href="#">2909</a>
:	
Humanswissprot	<a href="#">Q9NRY4</a>
_no :	
Mousegene_id :	<a href="#">232906</a>
Mouseswissprot	<a href="#">Q91YM2</a>
_no :	
Ratswissprot_no	<a href="#">P81128</a>
:	
Immunogen :	Synthesized phospho-peptide around the phosphorylation site of human GRF-1 (phospho Tyr1087)
Specificity :	Phospho-GRF-1 (Y1087) Polyclonal Antibody detects endogenous levels of GRF-1 protein only when phosphorylated at Y1087.
Formulation :	Liquid in PBS containing 50% glycerol, 0.5% BSA and 0.02% sodium azide.
Source :	Rabbit
Dilution :	Western Blot: 1/500 - 1/2000. ELISA: 1/10000. Not yet tested in other applications.
Purification :	The antibody was affinity-purified from rabbit antiserum by affinity-chromatography using epitope-specific immunogen.
Concentration :	1 mg/ml
Storage_stability	-20°C/1 year
:	
Msds :	<a href="#">MSDS_Antibody.pdf</a>
Other_name :	ARHGAP35; GRF1; GRLF1; KIAA1722; Rho GTPase-activating protein 35; Glucocorticoid



receptor DNA-binding factor 1; Glucocorticoid receptor repression factor 1; GRF-1; Rho  
GAP p190A; p190-A

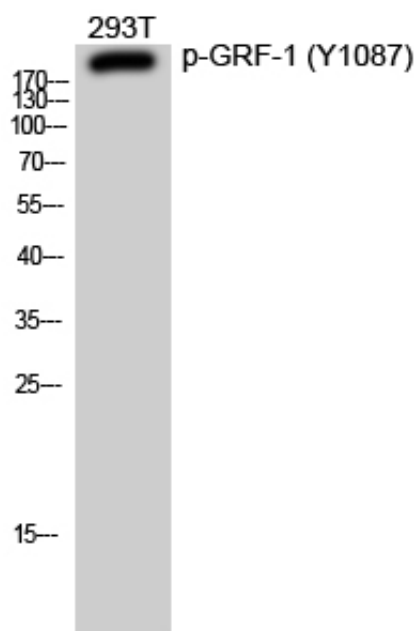
---

Molecular  
Weight :

190KD

---

## Product Images



Western Blot analysis of 293T cells using Phospho-GRF-1 (Y1087) Polyclonal Antibody diluted at 1 : 1000