

HDAC8 (phospho Ser39) Polyclonal Antibody

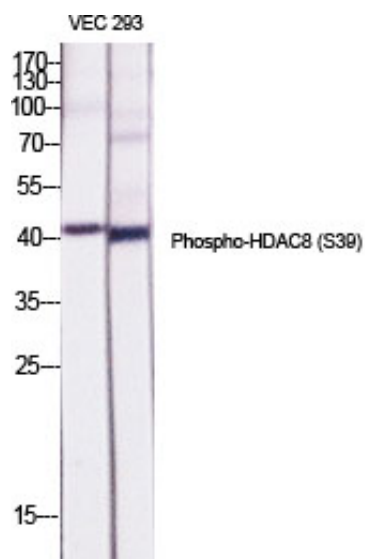
Catalog_no :	AP0127
Applications :	WB,IHC-p,ELISA
Reactivity :	Human,Mouse,Rat
Category :	抗原抗体
Size :	100µg/50µg/20µg
Gene_name :	HDAC8
Protein_name :	Histone deacetylase 8
Humangene_id :	55869
Humanswissprot_no :	Q9BY41
Mousegene_id :	70315
Mouseswissprot_no :	Q8VH37
Ratgene_id :	1.00912e+008
Ratswissprot_no :	B1WC68
Immunogen :	The antiserum was produced against synthesized peptide derived from human HDAC8 around the phosphorylation site of Ser39. AA range:5-54
Specificity :	Phospho-HDAC8 (S39) Polyclonal Antibody detects endogenous levels of HDAC8 protein only when phosphorylated at S39.
Formulation :	Liquid in PBS containing 50% glycerol, 0.5% BSA and 0.02% sodium azide.
Source :	Rabbit
Dilution :	Western Blot: 1/500 - 1/2000. Immunohistochemistry: 1/100 - 1/300. ELISA: 1/20000. Not yet tested in other applications.
Purification :	The antibody was affinity-purified from rabbit antiserum by affinity-chromatography using epitope-specific immunogen.
Concentration :	1 mg/ml
Storage_stability :	-20°C/1 year



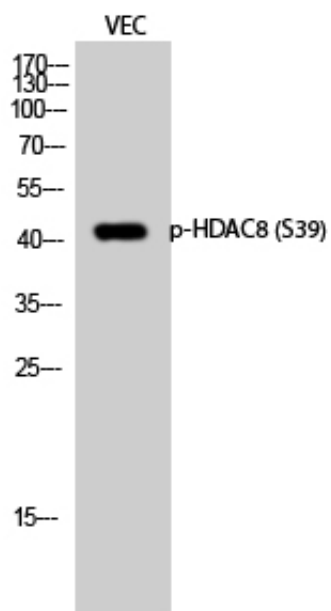
MsdS : MSDS_Antibody.pdf

Other_name : HDAC8; HDACL1; CDA07; Histone deacetylase 8; HD8

Product Images



Western Blot analysis of various cells using Phospho-HDAC8 (S39) Polyclonal Antibody diluted at 1 : 500



Western Blot analysis of VEC cells using Phospho-HDAC8 (S39) Polyclonal Antibody diluted at 1 : 500