

Histone H3 (phospho Ser10) Polyclonal Antibody

Catalog_no :	AP0129
Applications :	WB,IHC-p,IF,ELISA
Reactivity :	Human,Mouse,Rat
Category :	抗原抗体
Size :	100µg/50µg/20µg
Gene_name :	HIST1H3A
Protein_name :	Histone H3.1
Humangene_id :	8350/8351/8352/8353/8354/8355/8356/8357/8358/8968
Humanswissprot_no :	P68431/Q71DI3/P84243
Mousegene_id :	319152/15077/15078
Ratgene_id :	291159/100361558
Ratswissprot_no :	Q6LED0/P84245
Immunogen :	The antiserum was produced against synthesized peptide derived from human Histone H3.1 around the phosphorylation site of Ser10. AA range:1-50
Specificity :	Phospho-Histone H3 (S10) Polyclonal Antibody detects endogenous levels of Histone H3 protein only when phosphorylated at S10.
Formulation :	Liquid in PBS containing 50% glycerol, 0.5% BSA and 0.02% sodium azide.
Source :	Rabbit
Dilution :	Western Blot: 1/500 - 1/2000. Immunohistochemistry: 1/100 - 1/300. Immunofluorescence: 1/200 - 1/1000. ELISA: 1/10000. Not yet tested in other applications.
Purification :	The antibody was affinity-purified from rabbit antiserum by affinity-chromatography using epitope-specific immunogen.
Concentration :	1 mg/ml
Storage_stability :	-20°C/1 year
Msds :	MSDS_Antibody.pdf

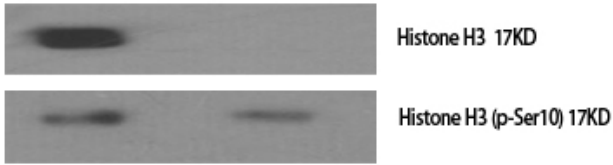


Other_name : HIST1H3A; H3FA; HIST1H3B; H3FL; HIST1H3C; H3FC; HIST1H3D; H3FB; HIST1H3E; H3FD;
HIST1H3F; H3FI; HIST1H3G; H3FH; HIST1H3H; H3FK; HIST1H3I; H3FF; HIST1H3J; H3FJ;
Histone H3.1; Histone H3/a; Histone H3/b; Histone H3/c; Histone H3/d; Histone H3

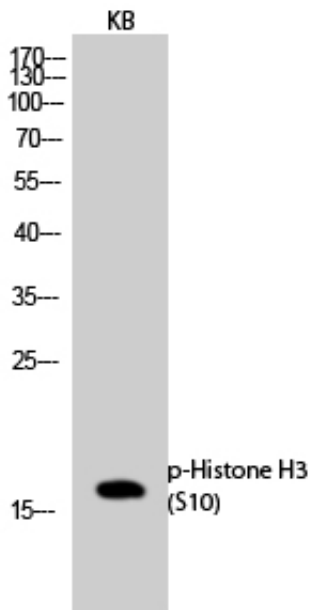
Molecular Weight : 15KD

Product Images

Western Blot analysis of various cells using Phospho-Histone H3 (S10) Polyclonal Antibody cells nucleus extracted by Minute TM Cytoplasmic and Nuclear Fractionation kit (SC-003, Inventbiotech, MN, USA).



-	+	-	phospho-peptide
-	-	+	non-phospho-peptide
+	+	+	Paclitaxel (1uM, 24hours)



Western Blot analysis of KB cells using Phospho-Histone H3 (S10) Polyclonal Antibody cells nucleus extracted by Minute TM Cytoplasmic and Nuclear Fractionation kit (SC-003, Inventbiotech, MN, USA).