

Hrs (phospho Tyr216) Polyclonal Antibody

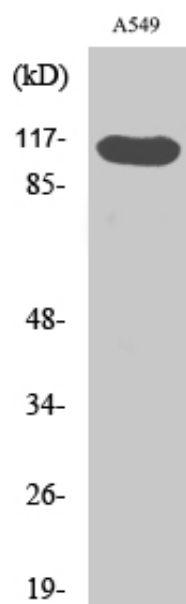
Catalog_no :	AP0132
Applications :	WB,ELISA
Reactivity :	Human,Mouse,Rat
Category :	抗原抗体
Size :	100µg/50µg/20µg
Gene_name :	HGS
Protein_name :	Hepatocyte growth factor-regulated tyrosine kinase substrate
Humangene_id :	9146
Humanswissprot_no :	O14964
Mousegene_id :	15239
Mouseswissprot_no :	Q99LI8
Ratgene_id :	56084
Ratswissprot_no :	Q9JJ50
Immunogen :	Synthesized phospho-peptide around the phosphorylation site of human Hrs (phospho Tyr216)
Specificity :	Phospho-Hrs (Y216) Polyclonal Antibody detects endogenous levels of Hrs protein only when phosphorylated at Y216.
Formulation :	Liquid in PBS containing 50% glycerol, 0.5% BSA and 0.02% sodium azide.
Source :	Rabbit
Dilution :	Western Blot: 1/500 - 1/2000. ELISA: 1/10000. Not yet tested in other applications.
Purification :	The antibody was affinity-purified from rabbit antiserum by affinity-chromatography using epitope-specific immunogen.
Concentration :	1 mg/ml
Storage_stability :	-20°C/1 year
Msds :	MSDS_Antibody.pdf



Other_name : HGS; HRS; Hepatocyte growth factor-regulated tyrosine kinase substrate; Hrs; Protein pp110

Molecular Weight : 115KD

Product Images



Western Blot analysis of various cells using Phospho-Hrs (Y216) Polyclonal Antibody