

HSF1 (phospho Ser303) Polyclonal Antibody

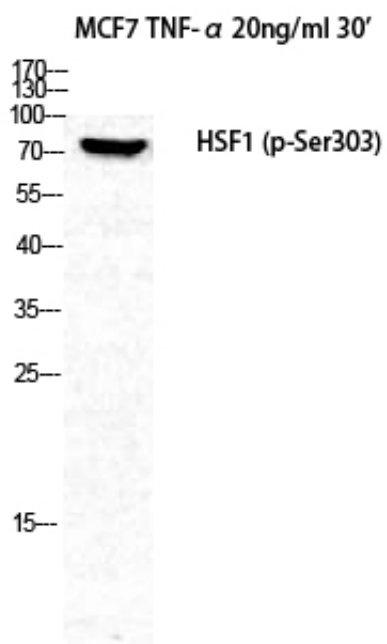
Catalog_no :	AP0133
Applications :	WB,IHC-p,IF,ELISA
Reactivity :	Human,Mouse
Category :	抗原抗体
Size :	100µg/50µg/20µg
Gene_name :	HSF1
Protein_name :	Heat shock factor protein 1
Humangene_id :	3297
Humanswissprot_no :	Q00613
Mousegene_id :	15499
Mouseswissprot_no :	P38532
Immunogen :	The antiserum was produced against synthesized peptide derived from human HSF1 around the phosphorylation site of Ser303. AA range:270-319
Specificity :	Phospho-HSF1 (S303) Polyclonal Antibody detects endogenous levels of HSF1 protein only when phosphorylated at S303.
Formulation :	Liquid in PBS containing 50% glycerol, 0.5% BSA and 0.02% sodium azide.
Source :	Rabbit
Dilution :	Western Blot: 1/500 - 1/2000. Immunohistochemistry: 1/100 - 1/300. Immunofluorescence: 1/200 - 1/1000. ELISA: 1/20000. Not yet tested in other applications.
Purification :	The antibody was affinity-purified from rabbit antiserum by affinity-chromatography using epitope-specific immunogen.
Concentration :	1 mg/ml
Storage_stability :	-20°C/1 year
Msds :	MSDS_Antibody.pdf
Other_name :	HSF1; HSTF1; Heat shock factor protein 1; HSF 1; Heat shock transcription factor 1; HSTF 1



Molecular
Weight :

82KD

Product Images



Western Blot analysis of MCF7+TNF cells using Phospho-HSF1 (S303) Polyclonal Antibody diluted at 1 : 1000