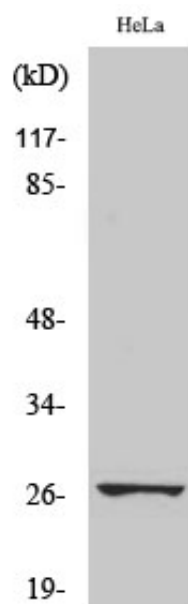


## HSP27 (phospho Ser78) Polyclonal Antibody

Catalog_no :	AP0135
Applications :	WB,IHC-p,ELISA
Reactivity :	Human
Category :	抗原抗体
Size :	100µg/50µg/20µg
Gene_name :	HSPB1
Protein_name :	Heat shock protein beta-1
Humangene_id :	<a href="#">3315</a>
Humanswissprot_no :	<a href="#">P04792</a>
Immunogen :	The antiserum was produced against synthesized peptide derived from human HSP27 around the phosphorylation site of Ser78. AA range:45-94
Specificity :	Phospho-HSP27 (S78) Polyclonal Antibody detects endogenous levels of HSP27 protein only when phosphorylated at S78.
Formulation :	Liquid in PBS containing 50% glycerol, 0.5% BSA and 0.02% sodium azide.
Source :	Rabbit
Dilution :	Western Blot: 1/500 - 1/2000. Immunohistochemistry: 1/100 - 1/300. ELISA: 1/20000. Not yet tested in other applications.
Purification :	The antibody was affinity-purified from rabbit antiserum by affinity-chromatography using epitope-specific immunogen.
Concentration :	1 mg/ml
Storage_stability :	-20°C/1 year
Msds :	<a href="#">MSDS_Antibody.pdf</a>
Other_name :	HSPB1; HSP27; HSP28; Heat shock protein beta-1; HspB1; 28 kDa heat shock protein; Estrogen-regulated 24 kDa protein; Heat shock 27 kDa protein; HSP 27; Stress-responsive protein 27; SRP27
Molecular Weight :	27KD

## Product Images



Western Blot analysis of various cells using Phospho-HSP27 (S78) Polyclonal Antibody