

HSP27 (phospho Ser82) Polyclonal Antibody

Catalog_no :	AP0136
Applications :	WB,IHC-p,ELISA
Reactivity :	Human,Mouse,Rat
Category :	抗原抗体
Size :	100µg/50µg/20µg
Gene_name :	HSPB1
Protein_name :	Heat shock protein beta-1
Humangene_id :	3315
Humanswissprot_no :	P04792
Mousegene_id :	15507
Mouseswissprot_no :	P14602
Ratgene_id :	24471
Ratswissprot_no :	P42930
Immunogen :	The antiserum was produced against synthesized peptide derived from human HSP27 around the phosphorylation site of Ser82. AA range:48-97
Specificity :	Phospho-HSP27 (S82) Polyclonal Antibody detects endogenous levels of HSP27 protein only when phosphorylated at S82.
Formulation :	Liquid in PBS containing 50% glycerol, 0.5% BSA and 0.02% sodium azide.
Source :	Rabbit
Dilution :	Western Blot: 1/500 - 1/2000. Immunohistochemistry: 1/100 - 1/300. ELISA: 1/5000. Not yet tested in other applications.
Purification :	The antibody was affinity-purified from rabbit antiserum by affinity-chromatography using epitope-specific immunogen.
Concentration :	1 mg/ml
Storage_stability :	-20°C/1 year

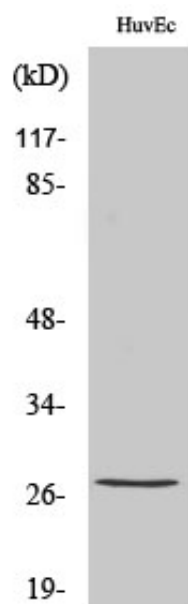


MsdS : [MSDS_Antibody.pdf](#)

Other_name : HSPB1; HSP27; HSP28; Heat shock protein beta-1; HspB1; 28 kDa heat shock protein; Estrogen-regulated 24 kDa protein; Heat shock 27 kDa protein; HSP 27; Stress-responsive protein 27; SRP27

Molecular Weight : 27KD

Product Images



Western Blot analysis of various cells using Phospho-HSP27 (S82) Polyclonal Antibody diluted at 1 : 1000