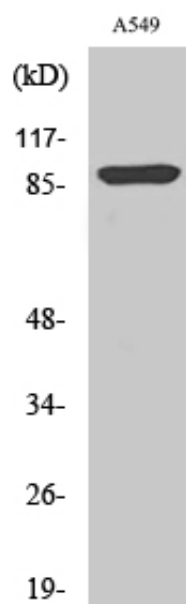


## ICAM-1 (phospho Tyr512) Polyclonal Antibody

Catalog_no :	AP0137
Applications :	WB,ELISA
Reactivity :	Human
Category :	抗原抗体
Size :	100µg/50µg/20µg
Gene_name :	ICAM1
Protein_name :	Intercellular adhesion molecule 1
Humangene_id :	<a href="#">3383</a>
Humanswissprot_no :	<a href="#">P05362</a>
Immunogen :	The antiserum was produced against synthesized peptide derived from human ICAM-1 around the phosphorylation site of Tyr512. AA range:479-528
Specificity :	Phospho-ICAM-1 (Y512) Polyclonal Antibody detects endogenous levels of ICAM-1 protein only when phosphorylated at Y512.
Formulation :	Liquid in PBS containing 50% glycerol, 0.5% BSA and 0.02% sodium azide.
Source :	Rabbit
Dilution :	Western Blot: 1/500 - 1/2000. ELISA: 1/40000. Not yet tested in other applications.
Purification :	The antibody was affinity-purified from rabbit antiserum by affinity-chromatography using epitope-specific immunogen.
Concentration :	1 mg/ml
Storage_stability :	-20°C/1 year
Msds :	MSDS_Antibody.pdf
Other_name :	ICAM1; Intercellular adhesion molecule 1; ICAM-1; Major group rhinovirus receptor; CD antigen CD54
Molecular Weight :	57KD

## Product Images



Western Blot analysis of various cells using Phospho-ICAM-1 (Y512) Polyclonal Antibody diluted at 1 : 500