



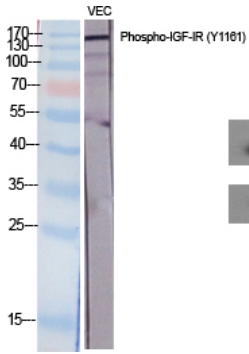
IGF-IR (phospho Tyr1161) Polyclonal Antibody

Catalog_no :	AP0138
Applications :	WB,IHC-p,IP,ELISA
Reactivity :	Human,Mouse,Rat
Category :	抗原抗体
Size :	100µg/50µg/20µg
Gene_name :	IGF1R
Protein_name :	Insulin-like growth factor 1 receptor
Humangene_id :	3480/3643
Humanswissprot_no :	P08069/P06213
Mousegene_id :	16001/16337
Ratgene_id :	25718
Ratswissprot_no :	P24062/P15127
Immunogen :	The antiserum was produced against synthesized peptide derived from human IGF1R around the phosphorylation site of Tyr1161. AA range:1131-1180
Specificity :	Phospho-IGF-IR (Y1161) Polyclonal Antibody detects endogenous levels of IGF-IR protein only when phosphorylated at Y1161.
Formulation :	Liquid in PBS containing 50% glycerol, 0.5% BSA and 0.02% sodium azide.
Source :	Rabbit
Dilution :	Western Blot: 1/500 - 1/2000. Immunohistochemistry: 1/100 - 1/300. Immunoprecipitation: 2-5 ug/mg lysate. ELISA: 1/20000. Not yet tested in other applications.
Purification :	The antibody was affinity-purified from rabbit antiserum by affinity-chromatography using epitope-specific immunogen.
Concentration :	1 mg/ml
Storage_stability :	-20°C/1 year
Msds :	MSDS_Antibody.pdf

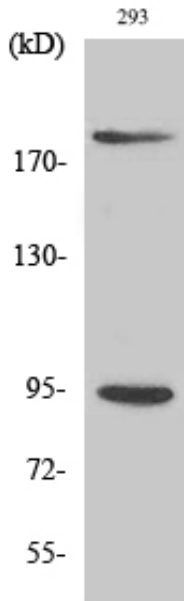
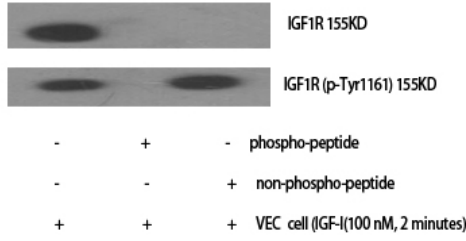


Other_name : IGF1R; Insulin-like growth factor 1 receptor; Insulin-like growth factor I receptor; IGF-I receptor; CD antigen CD221; INSR; Insulin receptor; IR; CD antigen CD220

Product Images



Western Blot analysis of various cells using Phospho-IGF-IR (Y1161) Polyclonal Antibody diluted at 1 : 2000



Western Blot analysis of 293 cells using Phospho-IGF-IR (Y1161) Polyclonal Antibody diluted at 1 : 2000