



IKK α / β (phospho Ser176/177) Polyclonal Antibody

Catalog_no :	AP0141
Applications :	WB,IHC-p,ELISA
Reactivity :	Human,Mouse,Rat
Category :	抗原抗体
Size :	100 μ g/50 μ g/20 μ g
Gene_name :	CHUK/IKBKB
Protein_name :	Inhibitor of nuclear factor kappa-B kinase subunit alpha
Humangene_id :	1147/3551
Humanswissprot_no :	O15111/O14920
Mousegene_id :	16150
Ratgene_id :	84351
Ratswissprot_no :	Q9QY78
Immunogen :	The antiserum was produced against synthesized peptide derived from human IKK-alpha around the phosphorylation site of Ser177. AA range:151-200
Specificity :	Phospho-IKK α / β (S176/177) Polyclonal Antibody detects endogenous levels of IKK α / β protein only when phosphorylated at S176/177.
Formulation :	Liquid in PBS containing 50% glycerol, 0.5% BSA and 0.02% sodium azide.
Source :	Rabbit
Dilution :	Western Blot: 1/500 - 1/2000. Immunohistochemistry: 1/100 - 1/300. ELISA: 1/10000. Not yet tested in other applications.
Purification :	The antibody was affinity-purified from rabbit antiserum by affinity-chromatography using epitope-specific immunogen.
Concentration :	1 mg/ml
Storage_stability :	-20°C/1 year
Msds :	MSDS_Antibody.pdf
Other_name :	CHUK; IKKA; TCF16; Inhibitor of nuclear factor kappa-B kinase subunit alpha; I-kappa-B

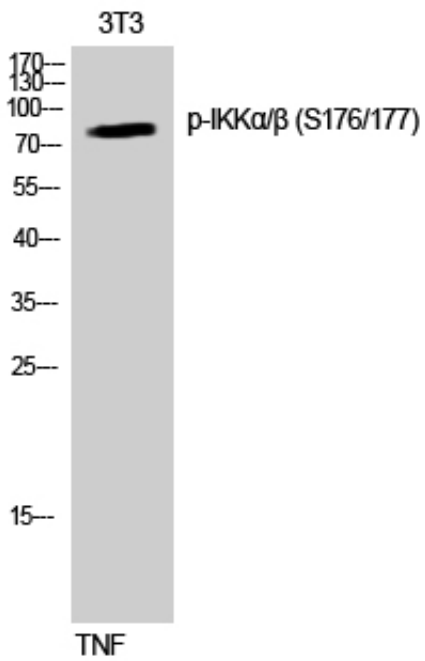


kinase alpha; IKK-A; IKK-alpha; IkbKA; IkappaB kinase; Conserved helix-loop-helix
ubiquitous kinase; I-kappa-B kinase 1; IKK1; Nuclear factor NF-kappa-B

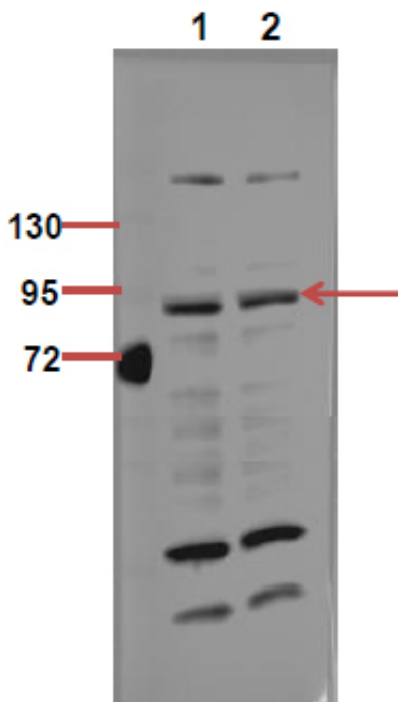
Molecular
Weight :

80KD

Product Images



Western Blot analysis of NIH-3T3 cells using Phospho-IKKα/β (S176/177) Polyclonal Antibody diluted at 1 : 1000



The picture was kindly provided by our customer, antibody was diluted at 1:500