

Integrin β 1 (phospho Thr788) Polyclonal Antibody

Catalog_no :	AP0143
Applications :	WB,IHC-p,ELISA
Reactivity :	Human,Mouse,Rat
Category :	抗原抗体
Size :	100 μ g/50 μ g/20 μ g
Gene_name :	ITGB1
Protein_name :	Integrin beta-1
Humangene_id :	3688
Humanswissprot_no :	P05556
Mousegene_id :	16412
Mouseswissprot_no :	P09055
Ratgene_id :	24511
Ratswissprot_no :	P49134
Immunogen :	The antiserum was produced against synthesized peptide derived from human Integrin beta1 around the phosphorylation site of Thr788. AA range:749-798
Specificity :	Phospho-Integrin β 1 (T788) Polyclonal Antibody detects endogenous levels of Integrin β 1 protein only when phosphorylated at T788.
Formulation :	Liquid in PBS containing 50% glycerol, 0.5% BSA and 0.02% sodium azide.
Source :	Rabbit
Dilution :	Western Blot: 1/500 - 1/2000. Immunohistochemistry: 1/100 - 1/300. ELISA: 1/20000. Not yet tested in other applications.
Purification :	The antibody was affinity-purified from rabbit antiserum by affinity-chromatography using epitope-specific immunogen.
Concentration :	1 mg/ml
Storage_stability :	-20°C/1 year

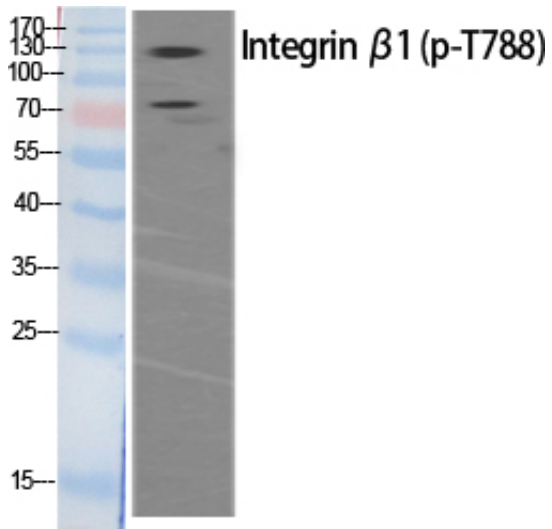


MsdS : MSDS_Antibody.pdf

Other_name : ITGB1; FNRB; MDF2; MSK12; Integrin beta-1; Fibronectin receptor subunit beta; VLA-4 subunit beta; CD antigen CD29

Molecular Weight : 135KD

Product Images



Western Blot analysis of various cells using Phospho-Integrin $\beta 1$ (T788) Polyclonal Antibody