

IRS-1 (phospho Ser307) Polyclonal Antibody

| | |
|---------------------|---|
| Catalog_no : | AP0146 |
| Applications : | WB,IHC-p,ELISA |
| Reactivity : | Human,Mouse,Rat,Monkey |
| Category : | 抗原抗体 |
| Size : | 100µg/50µg/20µg |
| Gene_name : | IRS1 |
| Protein_name : | Insulin receptor substrate 1 |
| Humangene_id : | 3667 |
| Humanswissprot_no : | P35568 |
| Mousegene_id : | 16367 |
| Mouseswissprot_no : | P35569 |
| Ratgene_id : | 25467 |
| Ratswissprot_no : | P35570 |
| Immunogen : | Synthesized phospho-peptide around the phosphorylation site of human IRS-1 (phospho Ser307) |
| Specificity : | Phospho-IRS-1 (S307) Polyclonal Antibody detects endogenous levels of IRS-1 protein only when phosphorylated at S307. |
| Formulation : | Liquid in PBS containing 50% glycerol, 0.5% BSA and 0.02% sodium azide. |
| Source : | Rabbit |
| Dilution : | Western Blot: 1/500 - 1/2000. Immunohistochemistry: 1/100 - 1/300. ELISA: 1/5000. Not yet tested in other applications. |
| Purification : | The antibody was affinity-purified from rabbit antiserum by affinity-chromatography using epitope-specific immunogen. |
| Concentration : | 1 mg/ml |
| Storage_stability : | -20°C/1 year |

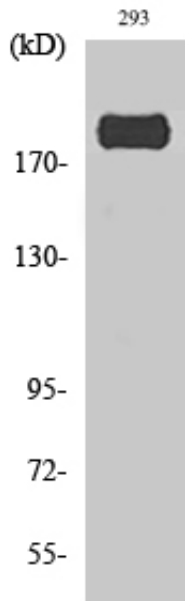


Msd : MSDS_Antibody.pdf

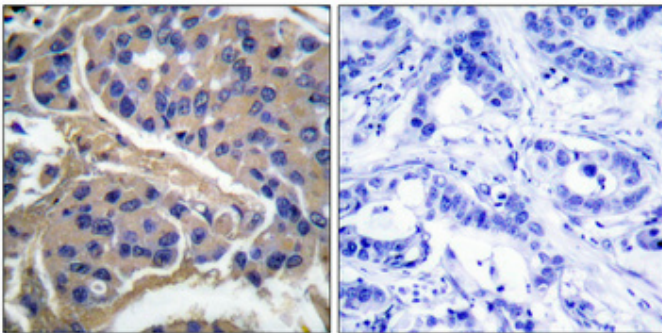
Other_name : IRS1; Insulin receptor substrate 1; IRS-1

Molecular Weight : 180KD,130KD

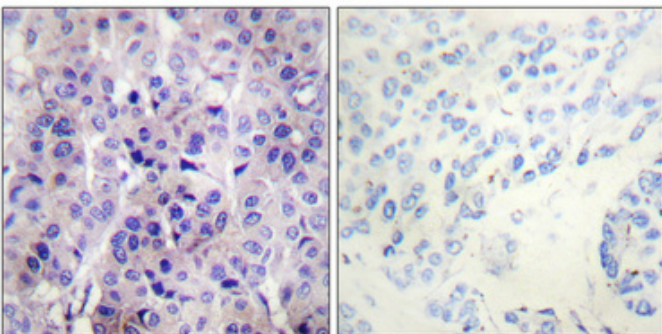
Product Images



Western Blot analysis of various cells using Phospho-IRS-1 (S307) Polyclonal Antibody diluted at 1 : 1000



Immunohistochemical analysis of paraffin-embedded Human breast cancer. Antibody was diluted at 1:100(4°,overnight). High-pressure and temperature Tris-EDTA,pH8.0 was used for antigen retrieval. Negative contrl (right) obtaned from antibody was pre-absorbed by immunogen peptide.



Immunohistochemical analysis of paraffin-embedded Human breast cancer. Antibody was diluted at 1:100(4°,overnight). High-pressure and temperature Tris-EDTA,pH8.0 was used for antigen retrieval. Negative contrl (right) obtaned from antibody was pre-absorbed by immunogen peptide.