

IRS-1 (phospho Ser307) Polyclonal Antibody

Catalog_no :	AP0147
Applications :	WB,IHC-p,IF,ELISA
Reactivity :	Human,Mouse,Rat
Category :	抗原抗体
Size :	100µg/50µg/20µg
Gene_name :	IRS1
Protein_name :	Insulin receptor substrate 1
Humangene_id :	3667
Humanswissprot_no :	P35568
Mousegene_id :	16367
Mouseswissprot_no :	P35569
Ratgene_id :	25467
Ratswissprot_no :	P35570
Immunogen :	The antiserum was produced against synthesized peptide derived from human IRS-1 around the phosphorylation site of Ser307. AA range:274-323
Specificity :	Phospho-IRS-1 (S307) Polyclonal Antibody detects endogenous levels of IRS-1 protein only when phosphorylated at S307.
Formulation :	Liquid in PBS containing 50% glycerol, 0.5% BSA and 0.02% sodium azide.
Source :	Rabbit
Dilution :	Western Blot: 1/500 - 1/2000. Immunohistochemistry: 1/100 - 1/300. Immunofluorescence: 1/200 - 1/1000. ELISA: 1/10000. Not yet tested in other applications.
Purification :	The antibody was affinity-purified from rabbit antiserum by affinity-chromatography using epitope-specific immunogen.
Concentration :	1 mg/ml
Storage_stability :	-20°C/1 year

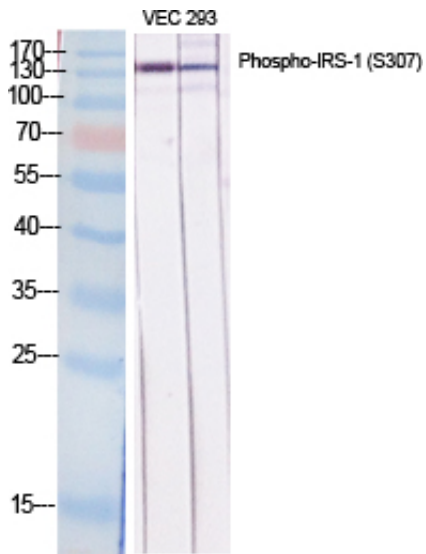


Msd : MSDS_Antibody.pdf

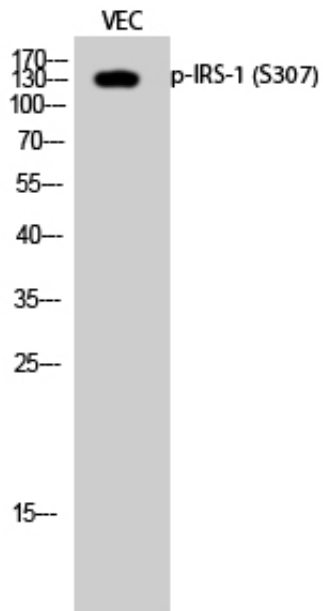
Other_name : IRS1; Insulin receptor substrate 1; IRS-1

Molecular Weight : 132KD

Product Images



Western Blot analysis of various cells using Phospho-IRS-1 (S307) Polyclonal Antibody diluted at 1 : 1000



Western Blot analysis of VEC cells using Phospho-IRS-1 (S307) Polyclonal Antibody diluted at 1 : 1000