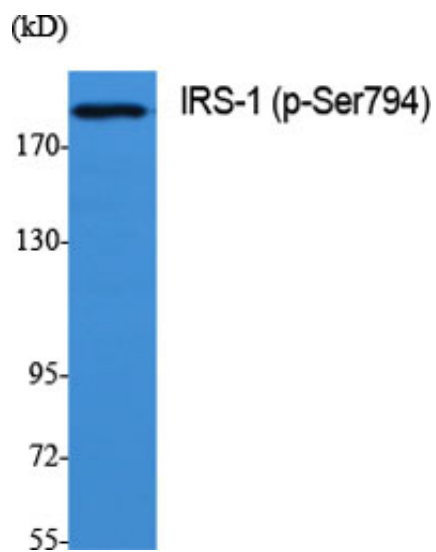


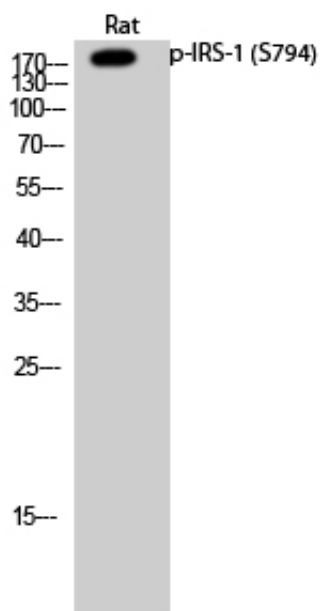
IRS-1 (phospho Ser794) Polyclonal Antibody

Catalog_no :	AP0150
Applications :	WB,IHC-p,IF,ELISA
Reactivity :	Human,Mouse,Rat
Category :	抗原抗体
Size :	100µg/50µg/20µg
Gene_name :	IRS1
Protein_name :	Insulin receptor substrate 1
Humangene_id :	3667
Humanswissprot_no :	P35568
Immunogen :	The antiserum was produced against synthesized peptide derived from human IRS-1 around the phosphorylation site of Ser794. AA range:760-809
Specificity :	Phospho-IRS-1 (S794) Polyclonal Antibody detects endogenous levels of IRS-1 protein only when phosphorylated at S794.
Formulation :	Liquid in PBS containing 50% glycerol, 0.5% BSA and 0.02% sodium azide.
Source :	Rabbit
Dilution :	Western Blot: 1/500 - 1/2000. Immunohistochemistry: 1/100 - 1/300. Immunofluorescence: 1/200 - 1/1000. ELISA: 1/40000. Not yet tested in other applications.
Purification :	The antibody was affinity-purified from rabbit antiserum by affinity-chromatography using epitope-specific immunogen.
Concentration :	1 mg/ml
Storage_stability :	-20°C/1 year
Msds :	MSDS_Antibody.pdf
Other_name :	IRS1; Insulin receptor substrate 1; IRS-1
Molecular Weight :	180KD

Product Images



Western Blot analysis of various cells using Phospho-IRS-1 (S794) Polyclonal Antibody diluted at 1 : 500



Western Blot analysis of Rat cells using Phospho-IRS-1 (S794) Polyclonal Antibody diluted at 1 : 500