

## IκB-β (phospho Ser23) Polyclonal Antibody

Catalog_no :	AP0153
Applications :	WB,IHC-p,IF,ELISA
Reactivity :	Human,Mouse,Rat
Category :	抗原抗体
Size :	100μg/50μg/20μg
Gene_name :	NFKB1B
Protein_name :	NF-kappa-B inhibitor beta
Humangene_id	<a href="#">4793</a>
:	
Humanswissprot	<a href="#">Q15653</a>
_no :	
Mousegene_id :	<a href="#">18036</a>
Mouseswissprot	<a href="#">Q60778</a>
_no :	
Ratswissprot_no	<a href="#">Q9JIA3</a>
:	
Immunogen :	The antiserum was produced against synthesized peptide derived from human IkappaB-beta around the phosphorylation site of Ser23. AA range:8-57
Specificity :	Phospho-IκB-β (S23) Polyclonal Antibody detects endogenous levels of IκB-β protein only when phosphorylated at S23.
Formulation :	Liquid in PBS containing 50% glycerol, 0.5% BSA and 0.02% sodium azide.
Source :	Rabbit
Dilution :	Western Blot: 1/500 - 1/2000. Immunohistochemistry: 1/100 - 1/300. Immunofluorescence: 1/200 - 1/1000. ELISA: 1/40000. Not yet tested in other applications.
Purification :	The antibody was affinity-purified from rabbit antiserum by affinity-chromatography using epitope-specific immunogen.
Concentration :	1 mg/ml
Storage_stability	-20°C/1 year
:	
Msds :	MSDS_Antibody.pdf



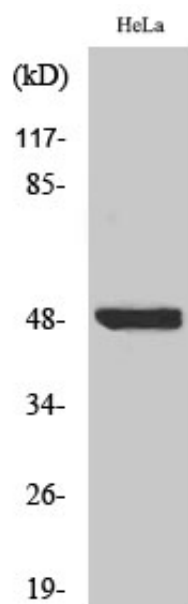
Other\_name : NFKBIB; IKBB; TRIP9; NF-kappa-B inhibitor beta; NF-kappa-BIB; I-kappa-B-beta; IkB-B; IkB-beta; IkappaBbeta; Thyroid receptor-interacting protein 9; TR-interacting protein 9; TRIP-9

---

Molecular Weight : 37KD

---

## Product Images



Western Blot analysis of various cells using Phospho-I $\kappa$ B- $\beta$  (S23) Polyclonal Antibody