

Jun B (phospho Ser259) Polyclonal Antibody

Catalog_no :	AP0158
Applications :	WB,IHC-p,IP,ELISA
Reactivity :	Human,Mouse,Rat
Category :	抗原抗体
Size :	100µg/50µg/20µg
Gene_name :	JUNB
Protein_name :	Transcription factor jun-B
Humangene_id :	3726
Humanswissprot_no :	P17275
Mousegene_id :	16477
Mouseswissprot_no :	P09450
Ratgene_id :	24517
Ratswissprot_no :	P24898
Immunogen :	The antiserum was produced against synthesized peptide derived from human JunB around the phosphorylation site of Ser259. AA range:226-275
Specificity :	Phospho-Jun B (S259) Polyclonal Antibody detects endogenous levels of Jun B protein only when phosphorylated at S259.
Formulation :	Liquid in PBS containing 50% glycerol, 0.5% BSA and 0.02% sodium azide.
Source :	Rabbit
Dilution :	Western Blot: 1/500 - 1/2000. Immunohistochemistry: 1/100 - 1/300. Immunoprecipitation: 2-5 ug/mg lysate. ELISA: 1/20000. Not yet tested in other applications.
Purification :	The antibody was affinity-purified from rabbit antiserum by affinity-chromatography using epitope-specific immunogen.
Concentration :	1 mg/ml
Storage_stability :	-20°C/1 year

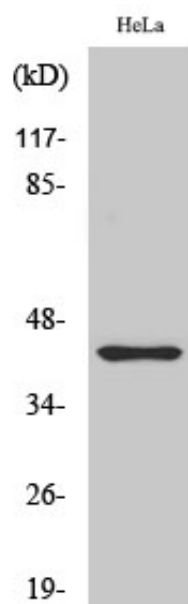


Msd : MSDS_Antibody.pdf

Other_name : JUNB; Transcription factor jun-B

Molecular Weight : 33KD

Product Images



Western Blot analysis of various cells using Phospho-Jun B (S259) Polyclonal Antibody cells nucleus extracted by Minute TM Cytoplasmic and Nuclear Fractionation kit (SC-003, Inventbiotech, MN, USA).