

LIMK-1 (phospho Thr508) Polyclonal Antibody

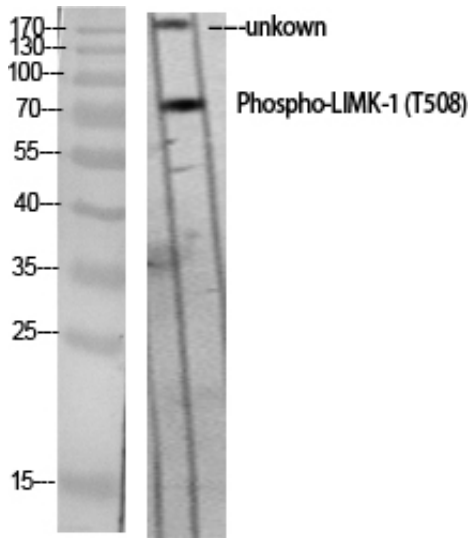
Catalog_no :	AP0161
Applications :	WB,IHC-p,IF,ELISA
Reactivity :	Human,Mouse,Rat
Category :	抗原抗体
Size :	100µg/50µg/20µg
Gene_name :	LIMK1
Protein_name :	LIM domain kinase 1
Humangene_id	3984
:	
Humanswissprot	P53667
_no :	
Mousegene_id :	16885
Mouseswissprot	P53668
_no :	
Ratswissprot_no	P53669
:	
Immunogen :	The antiserum was produced against synthesized peptide derived from human LIMK1 around the phosphorylation site of Thr508. AA range:471-520
Specificity :	Phospho-LIMK-1 (T508) Polyclonal Antibody detects endogenous levels of LIMK-1 protein only when phosphorylated at T508.
Formulation :	Liquid in PBS containing 50% glycerol, 0.5% BSA and 0.02% sodium azide.
Source :	Rabbit
Dilution :	Western Blot: 1/500 - 1/2000. Immunohistochemistry: 1/100 - 1/300. Immunofluorescence: 1/200 - 1/1000. ELISA: 1/10000. Not yet tested in other applications.
Purification :	The antibody was affinity-purified from rabbit antiserum by affinity-chromatography using epitope-specific immunogen.
Concentration :	1 mg/ml
Storage_stability	-20°C/1 year
:	
Msds :	MSDS_Antibody.pdf



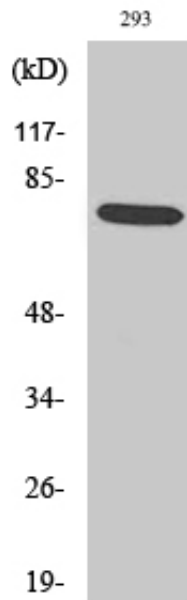
Other_name : LIMK1; LIMK; LIM domain kinase 1; LIMK-1

Molecular Weight : 72KD

Product Images



Western Blot analysis of various cells using Phospho-LIMK-1 (T508) Polyclonal Antibody diluted at 1 : 1000



Western Blot analysis of 293 cells using Phospho-LIMK-1 (T508) Polyclonal Antibody diluted at 1 : 1000

Western Blot analysis of HEPG2 using Phospho-LIMK-1 (T508) Polyclonal Antibody. Antibody was diluted at 1:1000

