

## LIMK-2 (phospho Thr505) Polyclonal Antibody

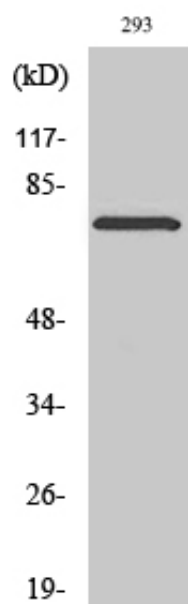
Catalog_no :	AP0162
Applications :	WB,IHC-p,IF,ELISA
Reactivity :	Human,Mouse,Rat
Category :	抗原抗体
Size :	100µg/50µg/20µg
Gene_name :	LIMK2
Protein_name :	LIM domain kinase 2
Humangene_id :	<a href="#">3985</a>
Humanswissprot_no :	<a href="#">P53671</a>
Mousegene_id :	<a href="#">16886</a>
Mouseswissprot_no :	<a href="#">O54785</a>
Ratgene_id :	<a href="#">29524</a>
Ratswissprot_no :	<a href="#">P53670</a>
Immunogen :	Synthesized phospho-peptide around the phosphorylation site of human LIMK-2 (phospho Thr505)
Specificity :	Phospho-LIMK-2 (T505) Polyclonal Antibody detects endogenous levels of LIMK-2 protein only when phosphorylated at T505.
Formulation :	Liquid in PBS containing 50% glycerol, 0.5% BSA and 0.02% sodium azide.
Source :	Rabbit
Dilution :	Western Blot: 1/500 - 1/2000. Immunohistochemistry: 1/100 - 1/300. Immunofluorescence: 1/200 - 1/1000. ELISA: 1/10000. Not yet tested in other applications.
Purification :	The antibody was affinity-purified from rabbit antiserum by affinity-chromatography using epitope-specific immunogen.
Concentration :	1 mg/ml
Storage_stability :	-20°C/1 year



Msd : MSDS\_Antibody.pdf

Other\_name : LIMK2; LIM domain kinase 2; LIMK-2

## Product Images



Western Blot analysis of various cells using Phospho-LIMK-2 (T505) Polyclonal Antibody