

MEF-2 (phospho Thr319) Polyclonal Antibody

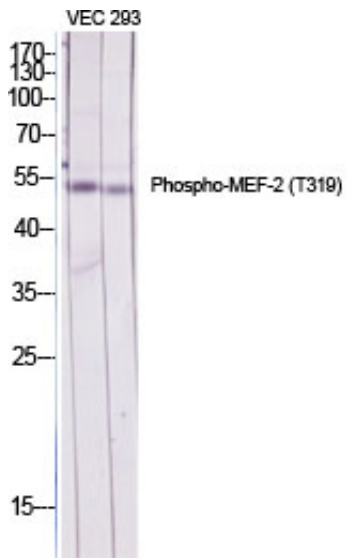
Catalog_no :	AP0164
Applications :	WB,IHC-p,ELISA
Reactivity :	Human,Mouse,Rat
Category :	抗原抗体
Size :	100µg/50µg/20µg
Gene_name :	MEF2A
Protein_name :	Myocyte-specific enhancer factor 2A
Humangene_id	4205
:	
Humanswissprot	Q02078
_no :	
Mousegene_id :	17258
Mouseswissprot	Q60929
_no :	
Ratgene_id :	309957
Ratswissprot_no	Q2MJT0
:	
Immunogen :	The antiserum was produced against synthesized peptide derived from human MEF2A around the phosphorylation site of Thr319. AA range:296-345
Specificity :	Phospho-MEF-2 (T319) Polyclonal Antibody detects endogenous levels of MEF-2 protein only when phosphorylated at T319.
Formulation :	Liquid in PBS containing 50% glycerol, 0.5% BSA and 0.02% sodium azide.
Source :	Rabbit
Dilution :	Western Blot: 1/500 - 1/2000. Immunohistochemistry: 1/100 - 1/300. ELISA: 1/20000. Not yet tested in other applications.
Purification :	The antibody was affinity-purified from rabbit antiserum by affinity-chromatography using epitope-specific immunogen.
Concentration :	1 mg/ml
Storage_stability	-20°C/1 year
:	



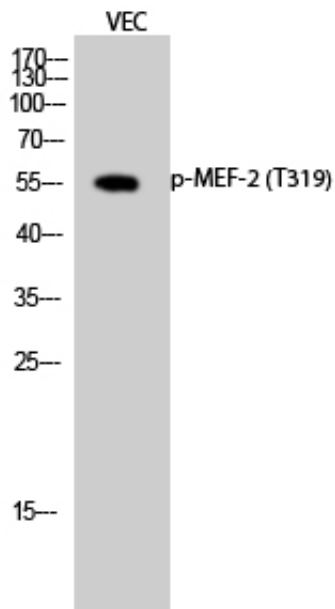
Msd : [MSDS_Antibody.pdf](#)

Other_name : [MEF2A; MEF2; Myocyte-specific enhancer factor 2A; Serum response factor-like protein 1](#)

Product Images



Western Blot analysis of various cells using Phospho-MEF-2 (T319) Polyclonal Antibody diluted at 1 : 2000 cells nucleus extracted by Minute TM Cytoplasmic and Nuclear Fractionation kit (SC-003, Inventbiotech, MN, USA).



Western Blot analysis of VEC cells using Phospho-MEF-2 (T319) Polyclonal Antibody diluted at 1 : 2000 cells nucleus extracted by Minute TM Cytoplasmic and Nuclear Fractionation kit (SC-003, Inventbiotech, MN, USA).