

## MEF-2D (phospho Ser444) Polyclonal Antibody

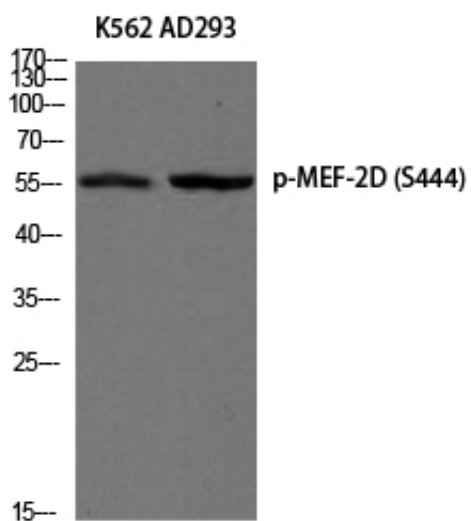
Catalog_no :	AP0165
Applications :	WB,IHC-p,ELISA
Reactivity :	Human,Mouse,Rat
Category :	抗原抗体
Size :	100µg/50µg/20µg
Gene_name :	MEF2D
Protein_name :	Myocyte-specific enhancer factor 2D
Humangene_id :	<a href="#">4209</a>
Humanswissprot_no :	<a href="#">Q14814</a>
Mouseswissprot_no :	<a href="#">Q63943</a>
Ratgene_id :	<a href="#">81518</a>
Ratswissprot_no :	<a href="#">O89038</a>
Immunogen :	The antiserum was produced against synthesized peptide derived from human MEF2D around the phosphorylation site of Ser444. AA range:410-459
Specificity :	Phospho-MEF-2D (S444) Polyclonal Antibody detects endogenous levels of MEF-2D protein only when phosphorylated at S444.
Formulation :	Liquid in PBS containing 50% glycerol, 0.5% BSA and 0.02% sodium azide.
Source :	Rabbit
Dilution :	Western Blot: 1/500 - 1/2000. Immunohistochemistry: 1/100 - 1/300. ELISA: 1/10000. Not yet tested in other applications.
Purification :	The antibody was affinity-purified from rabbit antiserum by affinity-chromatography using epitope-specific immunogen.
Concentration :	1 mg/ml
Storage_stability :	-20°C/1 year
Msds :	<a href="#">MSDS_Antibody.pdf</a>



Other\_name : MEF2D; Myocyte-specific enhancer factor 2D

Molecular Weight : 55KD

## Product Images



Western blot analysis of K562 AD293 using Phospho-MEF-2D (S444) antibody. Antibody was diluted at 1:500