

## MEK-1 (phospho Thr292) Polyclonal Antibody

Catalog_no :	AP0166
Applications :	WB,IHC-p,IF,ELISA
Reactivity :	Human,Mouse,Rat
Category :	抗原抗体
Size :	100µg/50µg/20µg
Gene_name :	MAP2K1
Protein_name :	Dual specificity mitogen-activated protein kinase kinase 1
Humangene_id	<a href="#">5604</a>
:	
Humanswissprot	<a href="#">Q02750</a>
_no :	
Mousegene_id :	<a href="#">26395</a>
Mouseswissprot	<a href="#">P31938</a>
_no :	
Ratgene_id :	<a href="#">170851</a>
Ratswissprot_no	<a href="#">Q01986</a>
:	
Immunogen :	The antiserum was produced against synthesized peptide derived from human MEK1 around the phosphorylation site of Thr291. AA range:261-310
Specificity :	Phospho-MEK-1 (T292) Polyclonal Antibody detects endogenous levels of MEK-1 protein only when phosphorylated at T292.
Formulation :	Liquid in PBS containing 50% glycerol, 0.5% BSA and 0.02% sodium azide.
Source :	Rabbit
Dilution :	Western Blot: 1/500 - 1/2000. Immunohistochemistry: 1/100 - 1/300. Immunofluorescence: 1/200 - 1/1000. ELISA: 1/10000. Not yet tested in other applications.
Purification :	The antibody was affinity-purified from rabbit antiserum by affinity-chromatography using epitope-specific immunogen.
Concentration :	1 mg/ml
Storage_stability	-20°C/1 year
:	

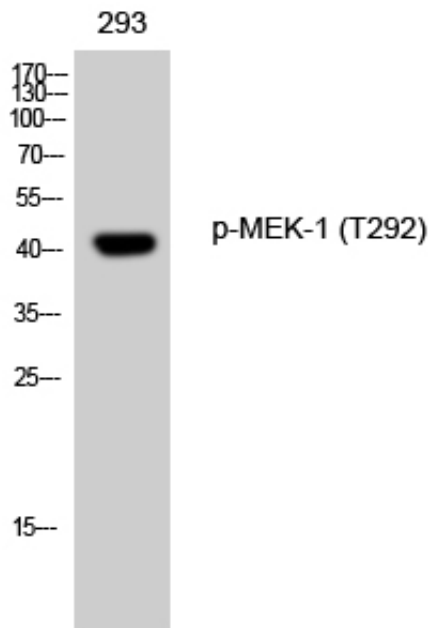


Msd : MSDS\_Antibody.pdf

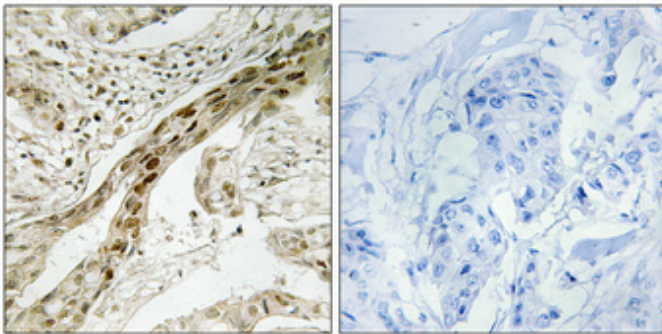
Other\_name : MAP2K1; MEK1; PRKMK1; Dual specificity mitogen-activated protein kinase kinase 1; MAP kinase kinase 1; MAPKK 1; MKK1; ERK activator kinase 1; MAPK/ERK kinase 1; MEK 1

Molecular Weight : 43KD

## Product Images



Western Blot analysis of 293 cells using Phospho-MEK-1 (T292) Polyclonal Antibody diluted at 1 : 1000



Immunohistochemical analysis of paraffin-embedded Human breast cancer. Antibody was diluted at 1:100(4°, overnight). High-pressure and temperature Tris-EDTA, pH8.0 was used for antigen retrieval. Negative control (right) obtained from antibody was pre-absorbed by immunogen peptide.