

## MEK-1/2 (phospho Ser218/222) Polyclonal Antibody

Catalog_no :	<u>AP0167</u>
Applications :	<u>WB,IHC-p,ELISA</u>
Reactivity :	<u>Human,Mouse,Rat</u>
Category :	<u>抗原抗体</u>
Size :	<u>100µg/50µg/20µg</u>
Gene_name :	<u>MAP2K1/MAP2K2</u>
Protein_name :	<u>Dual specificity mitogen-activated protein kinase kinase 1/2</u>
Humangene_id :	<u><a href="#">5604/5605</a></u>
Humanswissprot_no :	<u><a href="#">Q02750/P36507</a></u>
Mousegene_id :	<u><a href="#">26395/26396</a></u>
Ratgene_id :	<u><a href="#">170851/58960</a></u>
Ratswissprot_no :	<u><a href="#">Q01986/P36506</a></u>
Immunogen :	<u>The antiserum was produced against synthesized peptide derived from human MEK1/2 around the phosphorylation site of Ser217. AA range:189-238</u>
Specificity :	<u>Phospho-MEK-1/2 (S218/222) Polyclonal Antibody detects endogenous levels of MEK-1/2 protein only when phosphorylated at S218/222.</u>
Formulation :	<u>Liquid in PBS containing 50% glycerol, 0.5% BSA and 0.02% sodium azide.</u>
Source :	<u>Rabbit</u>
Dilution :	<u>Western Blot: 1/500 - 1/2000. Immunohistochemistry: 1/100 - 1/300. ELISA: 1/5000. Not yet tested in other applications.</u>
Purification :	<u>The antibody was affinity-purified from rabbit antiserum by affinity-chromatography using epitope-specific immunogen.</u>
Concentration :	<u>1 mg/ml</u>
Storage_stability :	<u>-20°C/1 year</u>
Msds :	<u><a href="#">MSDS_Antibody.pdf</a></u>
Other_name :	<u>MAP2K1; MEK1; PRKMK1; Dual specificity mitogen-activated protein kinase kinase 1;</u>



MAP kinase kinase 1; MAPKK 1; MKK1; ERK activator kinase 1; MAPK/ERK kinase 1; MEK 1; MAP2K2; MEK2; MKK2; PRKMK2; Dual specificity mitogen-activated protein k

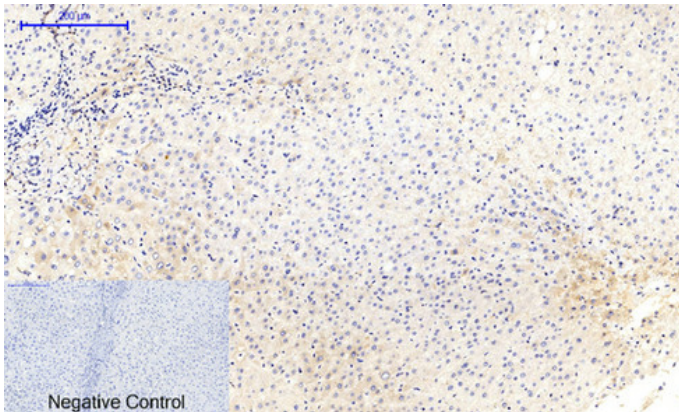
---

Molecular Weight :

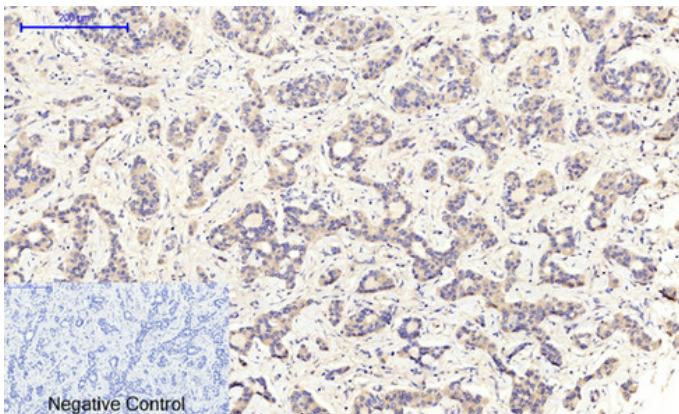
48KD

---

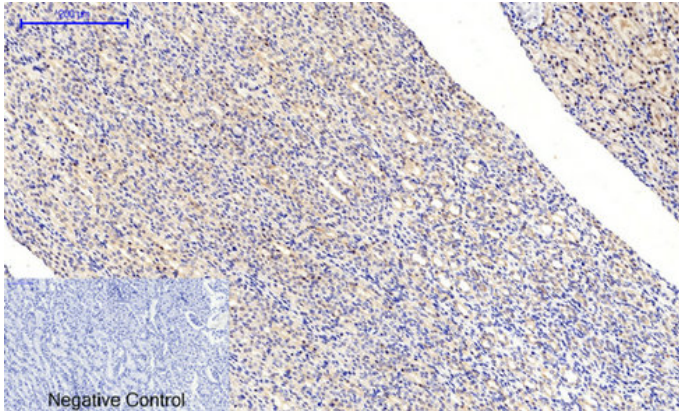
## Product Images



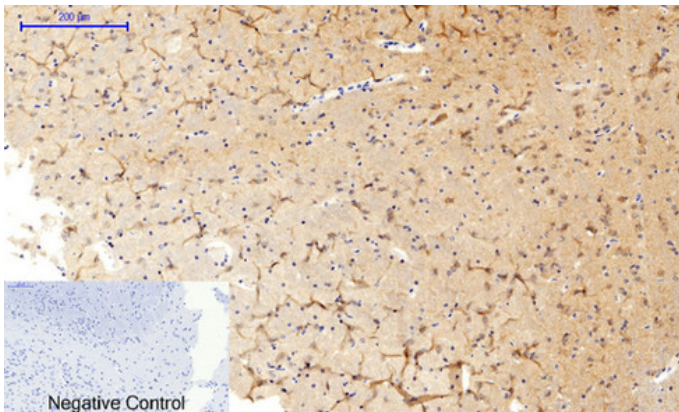
Immunohistochemical analysis of paraffin-embedded Human-liver tissue. 1,MEK-1/2 (phospho Ser218/222) Polyclonal Antibody was diluted at 1:200(4°C,overnight). 2, Sodium citrate pH 6.0 was used for antibody retrieval(>98°C,20min). 3,Secondary antibody was diluted at 1:200(room temperature, 30min). Negative control was used by secondary antibody only.



Immunohistochemical analysis of paraffin-embedded Human-liver-cancer tissue. 1,MEK-1/2 (phospho Ser218/222) Polyclonal Antibody was diluted at 1:200(4°C,overnight). 2, Sodium citrate pH 6.0 was used for antibody retrieval(>98°C,20min). 3,Secondary antibody was diluted at 1:200(room temperature, 30min). Negative control was used by secondary antibody only.

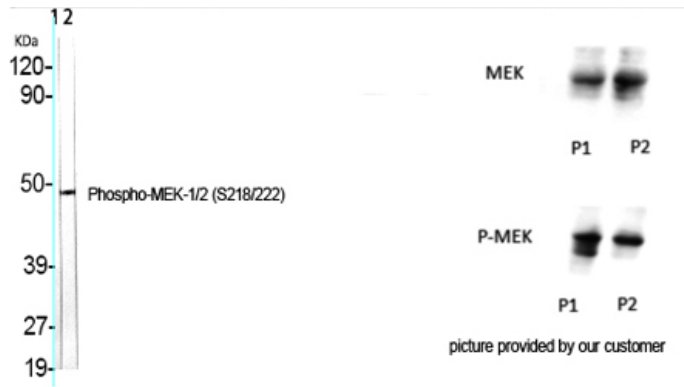


Immunohistochemical analysis of paraffin-embedded Rat-kidney tissue. 1,MEK-1/2 (phospho Ser218/222) Polyclonal Antibody was diluted at 1:200(4°C,overnight). 2, Sodium citrate pH 6.0 was used for antibody retrieval(>98°C,20min). 3,Secondary antibody was diluted at 1:200(room temperature, 30min). Negative control was used by secondary antibody only.



Immunohistochemical analysis of paraffin-embedded Rat-brain tissue. 1,MEK-1/2 (phospho Ser218/222) Polyclonal Antibody was diluted at 1:200(4°C,overnight). 2, Sodium citrate pH 6.0 was used for antibody retrieval(>98°C,20min). 3,Secondary antibody was diluted at 1:200(room temperature, 30min). Negative control was used by secondary antibody only.

Western Blot analysis of various cells using Phospho-MEK-1/2 (S218/222) Polyclonal Antibody



Western Blot analysis of 293 cells using Phospho-MEK-1/2 (S218/222) Polyclonal Antibody

