

MEK-2 (phospho Thr394) Polyclonal Antibody

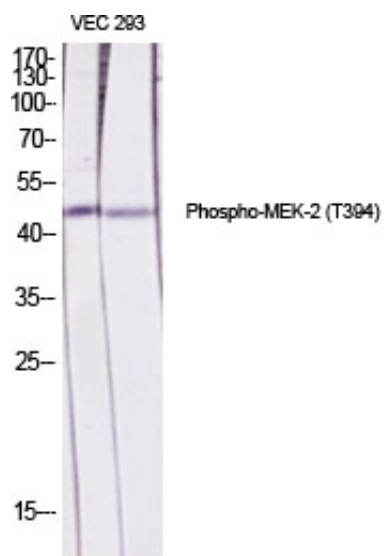
Catalog_no :	AP0169
Applications :	WB,IHC-p,IP,ELISA
Reactivity :	Human,Mouse,Rat
Category :	抗原抗体
Size :	100µg/50µg/20µg
Gene_name :	MAP2K2
Protein_name :	Dual specificity mitogen-activated protein kinase kinase 2
Humangene_id	5606
:	
Humanswissprot	P36507
_no :	
Mousegene_id :	26396
Mouseswissprot	Q63932
_no :	
Ratgene_id :	58960
Ratswissprot_no	P36506
:	
Immunogen :	The antiserum was produced against synthesized peptide derived from human MEK2 around the phosphorylation site of Thr394. AA range:261-310
Specificity :	Phospho-MEK-2 (T394) Polyclonal Antibody detects endogenous levels of MEK-2 protein only when phosphorylated at T394.
Formulation :	Liquid in PBS containing 50% glycerol, 0.5% BSA and 0.02% sodium azide.
Source :	Rabbit
Dilution :	Western Blot: 1/500 - 1/2000. Immunohistochemistry: 1/100 - 1/300. Immunoprecipitation: 2-5 ug/mg lysate. ELISA: 1/10000. Not yet tested in other applications.
Purification :	The antibody was affinity-purified from rabbit antiserum by affinity-chromatography using epitope-specific immunogen.
Concentration :	1 mg/ml
Storage_stability	-20°C/1 year
:	



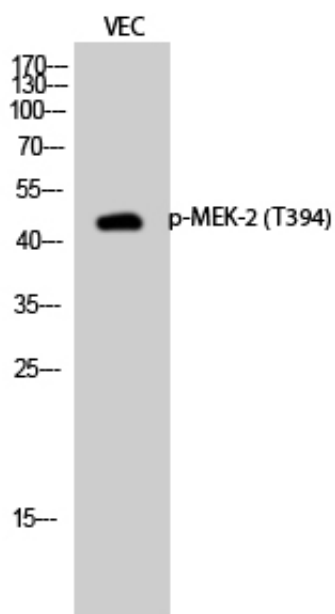
Msd : [MSDS_Antibody.pdf](#)

Other_name : [MAP2K2; MEK2; MKK2; PRKMK2; Dual specificity mitogen-activated protein kinase kinase 2; MAP kinase kinase 2; MAPKK 2; ERK activator kinase 2; MAPK/ERK kinase 2; MEK 2](#)

Product Images



Western Blot analysis of various cells using Phospho-MEK-2 (T394) Polyclonal Antibody diluted at 1 : 2000



Western Blot analysis of VEC cells using Phospho-MEK-2 (T394) Polyclonal Antibody diluted at 1 : 2000