

Met (phospho Tyr1234) Polyclonal Antibody

Catalog_no :	AP0174
Applications :	WB,ELISA
Reactivity :	Human,Mouse,Rat,Monkey
Category :	抗原抗体
Size :	100µg/50µg/20µg
Gene_name :	MET
Protein_name :	Hepatocyte growth factor receptor
Humangene_id	4233
:	
Humanswissprot	P08581
_no :	
Mouseswissprot	P16056
_no :	
Ratgene_id :	24553
Ratswissprot_no	P97523
:	
Immunogen :	The antiserum was produced against synthesized peptide derived from human Met around the phosphorylation site of Tyr1234. AA range:1201-1250
Specificity :	Phospho-Met (Y1234) Polyclonal Antibody detects endogenous levels of Met protein only when phosphorylated at Y1234.
Formulation :	Liquid in PBS containing 50% glycerol, 0.5% BSA and 0.02% sodium azide.
Source :	Rabbit
Dilution :	Western Blot: 1/500 - 1/2000. ELISA: 1/10000. Not yet tested in other applications.
Purification :	The antibody was affinity-purified from rabbit antiserum by affinity-chromatography using epitope-specific immunogen.
Concentration :	1 mg/ml
Storage_stability	-20°C/1 year
:	
Msds :	MSDS_Antibody.pdf
Other_name :	MET; Hepatocyte growth factor receptor; HGF receptor; HGF/SF receptor; Proto-

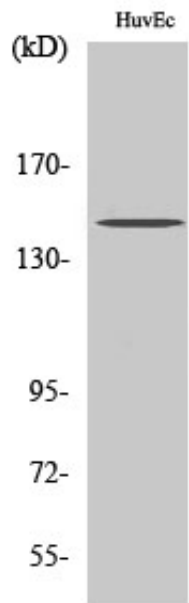


oncogene c-Met; Scatter factor receptor; SF receptor; Tyrosine-protein kinase Met

Molecular
Weight :

145KD

Product Images



Western Blot analysis of various cells using Phospho-Met (Y1234) Polyclonal Antibody diluted at 1 : 1000