

Neu (phospho Tyr1248) Polyclonal Antibody

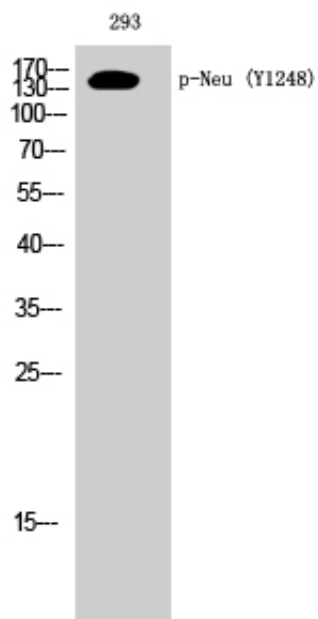
Catalog_no :	AP0178
Applications :	WB,IHC-p,ELISA
Reactivity :	Human,Mouse,Rat
Category :	抗原抗体
Size :	100µg/50µg/20µg
Gene_name :	ERBB2
Protein_name :	Receptor tyrosine-protein kinase erbB-2
Humangene_id :	2064
Humanswissprot_no :	P04626
Mousegene_id :	13866
Mouseswissprot_no :	P70424
Ratswissprot_no :	P06494
Immunogen :	The antiserum was produced against synthesized peptide derived from human HER2 around the phosphorylation site of Tyr1248. AA range:1206-1255
Specificity :	Phospho-Neu (Y1248) Polyclonal Antibody detects endogenous levels of Neu protein only when phosphorylated at Y1248.
Formulation :	Liquid in PBS containing 50% glycerol, 0.5% BSA and 0.02% sodium azide.
Source :	Rabbit
Dilution :	Western Blot: 1/500 - 1/2000. Immunohistochemistry: 1/100 - 1/300. ELISA: 1/20000. Not yet tested in other applications.
Purification :	The antibody was affinity-purified from rabbit antiserum by affinity-chromatography using epitope-specific immunogen.
Concentration :	1 mg/ml
Storage_stability :	-20°C/1 year
Msds :	MSDS_Antibody.pdf



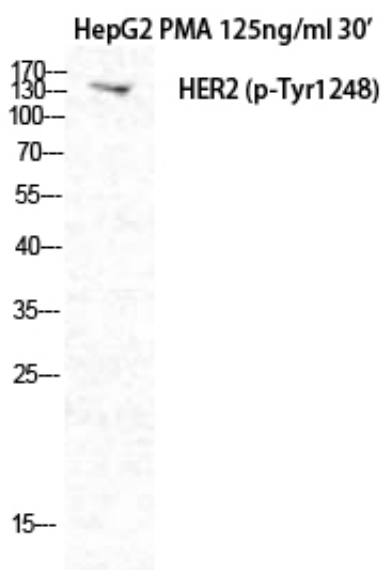
Other_name : ERBB2; HER2; MLN19; NEU; NGL; Receptor tyrosine-protein kinase erbB-2; Metastatic lymph node gene 19 protein; MLN 19; Proto-oncogene Neu; Proto-oncogene c-ErbB-2; Tyrosine kinase-type cell surface receptor HER2; p185erbB2; CD antigen CD34

Molecular Weight : 180KD

Product Images



Western Blot analysis of 293 cells using Phospho-Neu (Y1248) Polyclonal Antibody diluted at 1 : 1000



Western Blot analysis of HepG2+PMA cells using Phospho-Neu (Y1248) Polyclonal Antibody diluted at 1 : 1000