

## Neu (phospho Tyr877) Polyclonal Antibody

Catalog_no :	AP0179
Applications :	WB,IHC-p,IP,ELISA
Reactivity :	Human,Mouse,Rat
Category :	抗原抗体
Size :	100µg/50µg/20µg
Gene_name :	ERBB2
Protein_name :	Receptor tyrosine-protein kinase erbB-2
Humangene_id	<a href="#">2064</a>
:	
Humanswissprot	<a href="#">P04626</a>
_no :	
Mousegene_id :	<a href="#">13866</a>
Mouseswissprot	<a href="#">P70424</a>
_no :	
Ratswissprot_no	<a href="#">P06494</a>
:	
Immunogen :	The antiserum was produced against synthesized peptide derived from human HER2 around the phosphorylation site of Tyr877. AA range:851-900
Specificity :	Phospho-Neu (Y877) Polyclonal Antibody detects endogenous levels of Neu protein only when phosphorylated at Y877.
Formulation :	Liquid in PBS containing 50% glycerol, 0.5% BSA and 0.02% sodium azide.
Source :	Rabbit
Dilution :	Western Blot: 1/500 - 1/2000. Immunohistochemistry: 1/100 - 1/300. Immunoprecipitation: 2-5 ug/mg lysate. ELISA: 1/10000. Not yet tested in other applications.
Purification :	The antibody was affinity-purified from rabbit antiserum by affinity-chromatography using epitope-specific immunogen.
Concentration :	1 mg/ml
Storage_stability	-20°C/1 year
:	
Msds :	MSDS_Antibody.pdf



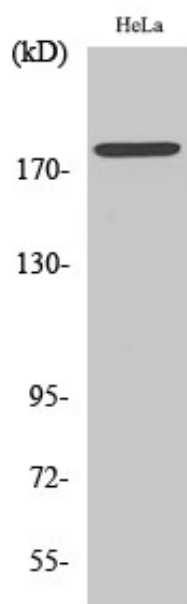
Other\_name : ERBB2; HER2; MLN19; NEU; NGL; Receptor tyrosine-protein kinase erbB-2; Metastatic lymph node gene 19 protein; MLN 19; Proto-oncogene Neu; Proto-oncogene c-ErbB-2; Tyrosine kinase-type cell surface receptor HER2; p185erbB2; CD antigen CD340

---

Molecular Weight : 180KD

---

## Product Images



Western Blot analysis of various cells using Phospho-Neu (Y877) Polyclonal Antibody diluted at 1 : 500