

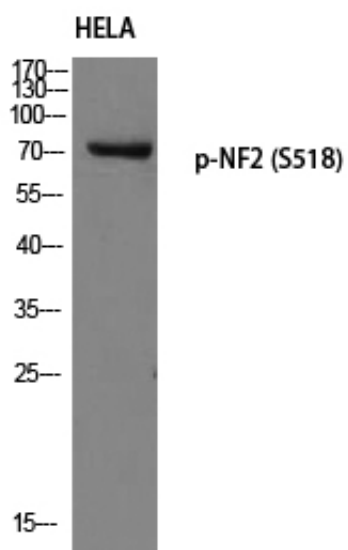
NF2 (phospho Ser518) Polyclonal Antibody

| | |
|---------------------|---|
| Catalog_no : | AP0180 |
| Applications : | WB,IHC-p,IF,ELISA |
| Reactivity : | Human,Mouse,Rat |
| Category : | 抗原抗体 |
| Size : | 100µg/50µg/20µg |
| Gene_name : | NF2 |
| Protein_name : | Merlin |
| Humangene_id : | 4771 |
| Humanswissprot_no : | P35240 |
| Mousegene_id : | 18016 |
| Mouseswissprot_no : | P46662 |
| Ratgene_id : | 25744 |
| Ratswissprot_no : | Q63648 |
| Immunogen : | The antiserum was produced against synthesized peptide derived from human Merlin around the phosphorylation site of Ser518. AA range:485-534 |
| Specificity : | Phospho-NF2 (S518) Polyclonal Antibody detects endogenous levels of NF2 protein only when phosphorylated at S518. |
| Formulation : | Liquid in PBS containing 50% glycerol, 0.5% BSA and 0.02% sodium azide. |
| Source : | Rabbit |
| Dilution : | Western Blot: 1/500 - 1/2000. Immunohistochemistry: 1/100 - 1/300. Immunofluorescence: 1/200 - 1/1000. ELISA: 1/5000. Not yet tested in other applications. |
| Purification : | The antibody was affinity-purified from rabbit antiserum by affinity-chromatography using epitope-specific immunogen. |
| Concentration : | 1 mg/ml |
| Storage_stability : | -20°C/1 year |



| | |
|--------------------|---|
| MsdS : | MSDS_Antibody.pdf |
| Other_name : | NF2; SCH; Merlin; Moesin-ezrin-radixin-like protein; Neurofibromin-2; Schwannomerlin; Schwannomin |
| Molecular Weight : | 70KD |

Product Images



Western blot analysis of HELA using p-NF2 (S518) antibody. Antibody was diluted at 1:1000