

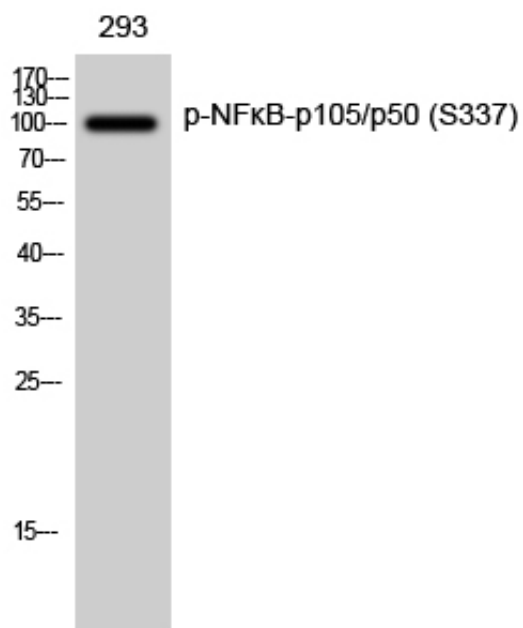
## NFκB-p105/p50 (phospho Ser337) Polyclonal Antibody

Catalog_no :	AP0186
Applications :	WB,IHC-p,IF,ELISA
Reactivity :	Human,Mouse,Rat
Category :	抗原抗体
Size :	100μg/50μg/20μg
Gene_name :	NFKB1
Protein_name :	Nuclear factor NF-kappa-B p105 subunit
Humangene_id	<a href="#">4790</a>
:	
Humanswissprot	<a href="#">P19838</a>
_no :	
Mousegene_id :	<a href="#">18033</a>
Mouseswissprot	<a href="#">P25799</a>
_no :	
Ratswissprot_no	<a href="#">Q63369</a>
:	
Immunogen :	The antiserum was produced against synthesized peptide derived from human NF-kappaB p105/p50 around the phosphorylation site of Ser337. AA range:304-353
Specificity :	Phospho-NFκB-p105/p50 (S337) Polyclonal Antibody detects endogenous levels of NFκB-p105/p50 protein only when phosphorylated at S337.
Formulation :	Liquid in PBS containing 50% glycerol, 0.5% BSA and 0.02% sodium azide.
Source :	Rabbit
Dilution :	Western Blot: 1/500 - 1/2000. Immunohistochemistry: 1/100 - 1/300. Immunofluorescence: 1/200 - 1/1000. ELISA: 1/20000. Not yet tested in other applications.
Purification :	The antibody was affinity-purified from rabbit antiserum by affinity-chromatography using epitope-specific immunogen.
Concentration :	1 mg/ml
Storage_stability	-20°C/1 year
:	
Msds :	MSDS_Antibody.pdf



Other\_name : NFKB1; Nuclear factor NF-kappa-B p105 subunit; DNA-binding factor KBF1; EBP-1; Nuclear factor of kappa light polypeptide gene enhancer in B-cells 1

## Product Images



Western Blot analysis of 293 cells using Phospho-NFκB-p105/p50 (S337) Polyclonal Antibody diluted at 1 : 1000