

NFκB-p65 (phospho Ser276) Polyclonal Antibody

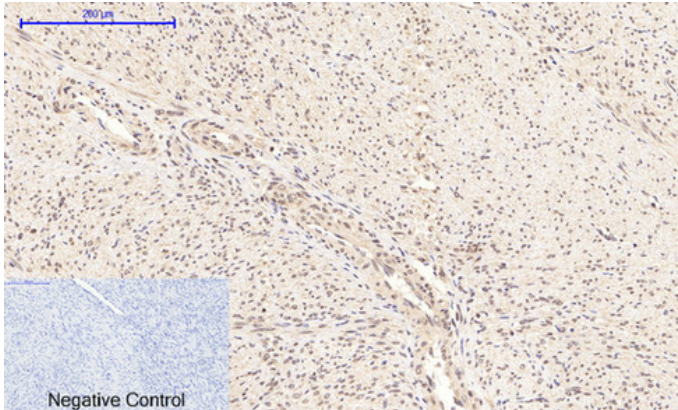
Catalog_no :	AP0187
Applications :	WB,IHC-p,IP,ELISA
Reactivity :	Human,Mouse,Rat
Category :	抗原抗体
Size :	100μg/50μg/20μg
Gene_name :	RELA
Protein_name :	Transcription factor p65
Humangene_id :	5970
Humanswissprot_no :	Q04206
Mousegene_id :	19697
Mouseswissprot_no :	Q04207
Immunogen :	The antiserum was produced against synthesized peptide derived from human NF-kappaB p65 around the phosphorylation site of Ser276. AA range:249-298
Specificity :	Phospho-NFκB-p65 (S276) Polyclonal Antibody detects endogenous levels of NFκB-p65 protein only when phosphorylated at S276.
Formulation :	Liquid in PBS containing 50% glycerol, 0.5% BSA and 0.02% sodium azide.
Source :	Rabbit
Dilution :	Western Blot: 1/500 - 1/2000. Immunohistochemistry: 1/100 - 1/300. Immunoprecipitation: 2-5 ug/mg lysate. ELISA: 1/20000. Not yet tested in other applications.
Purification :	The antibody was affinity-purified from rabbit antiserum by affinity-chromatography using epitope-specific immunogen.
Concentration :	1 mg/ml
Storage_stability :	-20°C/1 year
Msds :	MSDS_Antibody.pdf
Other_name :	RELA; NFKB3; Transcription factor p65; Nuclear factor NF-kappa-B p65 subunit; Nuclear factor of kappa light polypeptide gene enhancer in B-cells 3



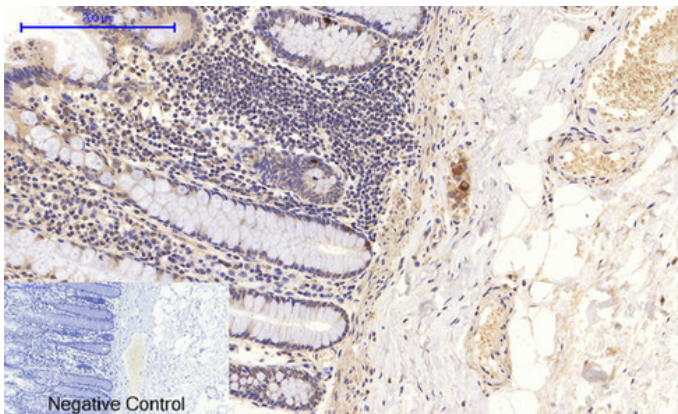
Molecular
Weight :

60KD

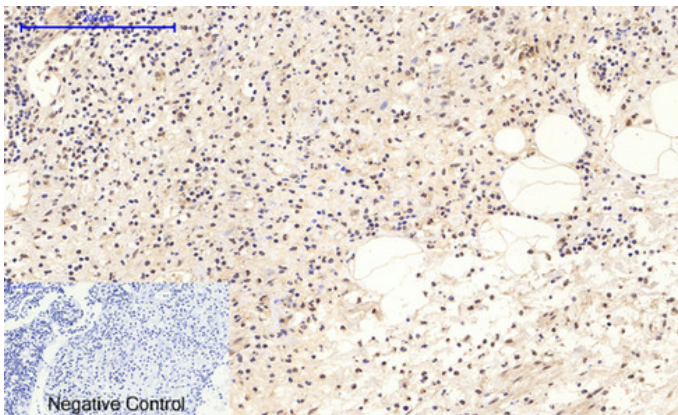
Product Images



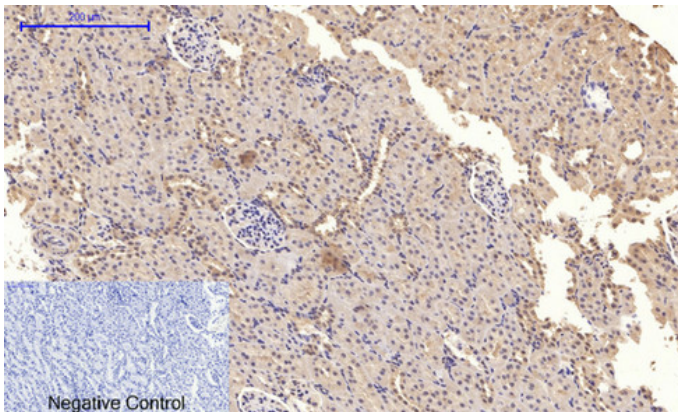
Immunohistochemical analysis of paraffin-embedded Human-uterus-cancer tissue. 1,NFKB-p65 (phospho Ser276) Polyclonal Antibody was diluted at 1:200(4°C,overnight). 2, Sodium citrate pH 6.0 was used for antibody retrieval(>98°C,20min). 3,Secondary antibody was diluted at 1:200(room temperature, 30min). Negative control was used by secondary antibody only.



Immunohistochemical analysis of paraffin-embedded Human-colon tissue. 1,NFKB-p65 (phospho Ser276) Polyclonal Antibody was diluted at 1:200(4°C,overnight). 2, Sodium citrate pH 6.0 was used for antibody retrieval(>98°C,20min). 3,Secondary antibody was diluted at 1:200(room temperature, 30min). Negative control was used by secondary antibody only.

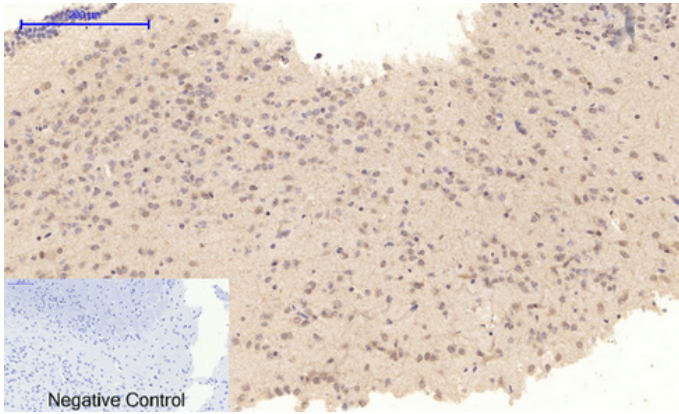


Immunohistochemical analysis of paraffin-embedded Human-Appendix tissue. 1,NFKB-p65 (phospho Ser276) Polyclonal Antibody was diluted at 1:200(4°C,overnight). 2, Sodium citrate pH 6.0 was used for antibody retrieval(>98°C,20min). 3,Secondary antibody was diluted at 1:200(room temperature, 30min). Negative control was used by secondary antibody only.

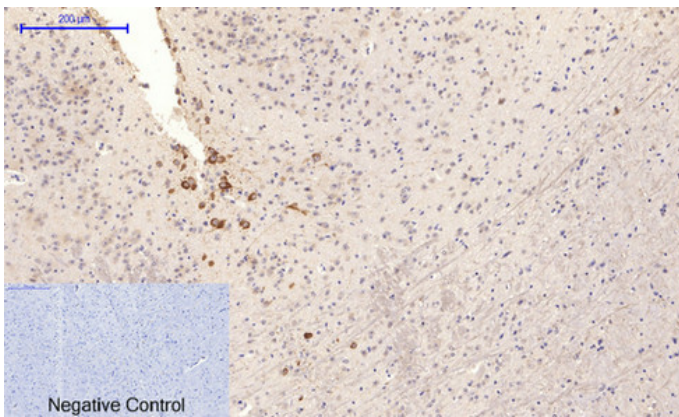


Immunohistochemical analysis of paraffin-embedded Rat-kidney tissue. 1,NFKB-p65 (phospho Ser276) Polyclonal Antibody was diluted at 1:200(4°C,overnight). 2, Sodium citrate pH 6.0 was used for antibody retrieval(>98°C,20min). 3,Secondary antibody was diluted at 1:200(room temperature, 30min). Negative control was used by secondary antibody only.

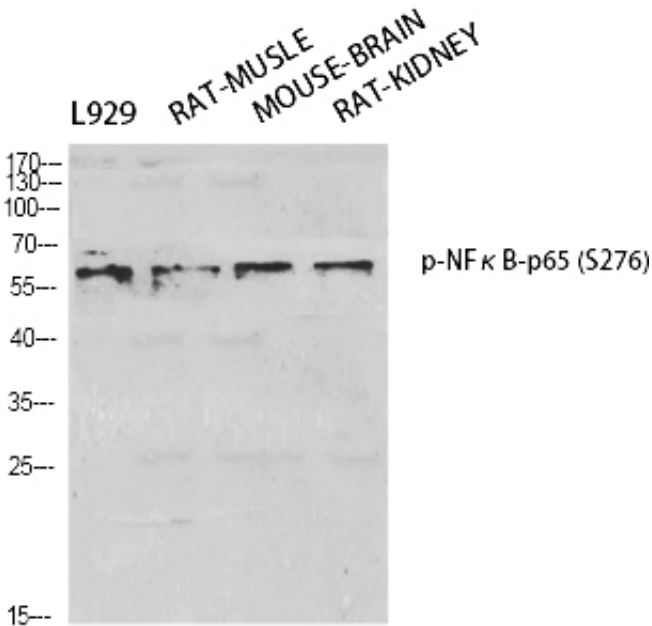
Immunohistochemical analysis of paraffin-embedded Rat-brain tissue. 1,NFKB-p65 (phospho Ser276)



Polyclonal Antibody was diluted at 1:200(4°C,overnight).
2, Sodium citrate pH 6.0 was used for antibody retrieval(>98°C,20min). 3,Secondary antibody was diluted at 1:200(room temperature, 30min). Negative control was used by secondary antibody only.

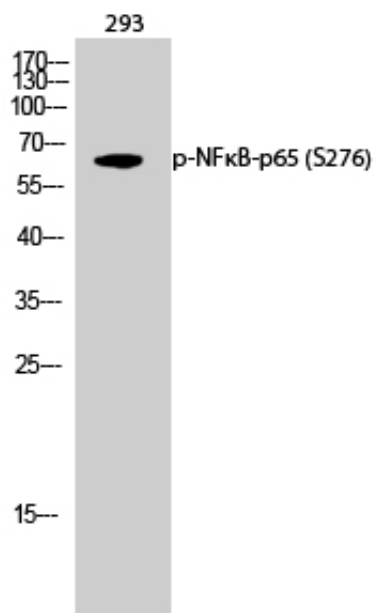


Immunohistochemical analysis of paraffin-embedded Mouse-brain tissue. 1,NFκB-p65 (phospho Ser276) Polyclonal Antibody was diluted at 1:200(4°C,overnight).
2, Sodium citrate pH 6.0 was used for antibody retrieval(>98°C,20min). 3,Secondary antibody was diluted at 1:200(room temperature, 30min). Negative control was used by secondary antibody only.



Western Blot analysis of various cells using Phospho-NFκB-p65 (S276) Polyclonal Antibody diluted at 1 : 1000

Western Blot analysis of 293 cells using Phospho-NFκB-p65 (S276) Polyclonal Antibody diluted at 1 : 1000



The picture was kindly provided by our customer



The First Affiliated Hospital of China Medical University
Dr. HouDianDong