

## Op18 (phospho Ser38) Polyclonal Antibody

Catalog_no :	AP0199
Applications :	WB,IHC-p,ELISA
Reactivity :	Human,Mouse,Rat,Monkey
Category :	抗原抗体
Size :	100µg/50µg/20µg
Gene_name :	STMN1
Protein_name :	Stathmin
Humangene_id :	<a href="#">3925</a>
Humanswissprot_no :	<a href="#">P16949</a>
Mousegene_id :	<a href="#">16765</a>
Mouseswissprot_no :	<a href="#">P54227</a>
Ratgene_id :	<a href="#">29332</a>
Ratswissprot_no :	<a href="#">P13668</a>
Immunogen :	The antiserum was produced against synthesized peptide derived from human Stathmin 1 around the phosphorylation site of Ser37. AA range:5-54
Specificity :	Phospho-Op18 (S38) Polyclonal Antibody detects endogenous levels of Op18 protein only when phosphorylated at S38.
Formulation :	Liquid in PBS containing 50% glycerol, 0.5% BSA and 0.02% sodium azide.
Source :	Rabbit
Dilution :	Western Blot: 1/500 - 1/2000. Immunohistochemistry: 1/100 - 1/300. ELISA: 1/20000. Not yet tested in other applications.
Purification :	The antibody was affinity-purified from rabbit antiserum by affinity-chromatography using epitope-specific immunogen.
Concentration :	1 mg/ml
Storage_stability :	-20°C/1 year

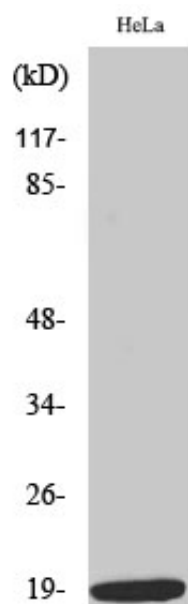


Msd : [MSDS\\_Antibody.pdf](#)

Other\_name : STMN1; C1orf215; LAP18; OP18; Stathmin; Leukemia-associated phosphoprotein p18; Metablastin; Oncoprotein 18; Op18; Phosphoprotein p19; pp19; Prosofin; Protein Pr22; pp17

Molecular Weight : 18KD

## Product Images



Western Blot analysis of various cells using Phospho-Op18 (S38) Polyclonal Antibody