

p21 (phospho Thr145) Polyclonal Antibody

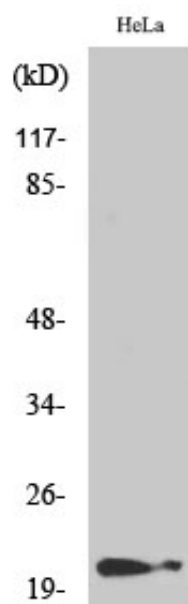
Catalog_no :	AP0200
Applications :	WB,IHC-p,ELISA
Reactivity :	Human,Mouse,Rat
Category :	抗原抗体
Size :	100µg/50µg/20µg
Gene_name :	CDKN1A
Protein_name :	Cyclin-dependent kinase inhibitor 1
Humangene_id	1026
:	
Humanswissprot	P38936
_no :	
Mousegene_id :	12575
Mouseswissprot	P39689
_no :	
Immunogen :	The antiserum was produced against synthesized peptide derived from human p21 Cip1 around the phosphorylation site of Thr145. AA range:111-160
Specificity :	Phospho-p21 (T145) Polyclonal Antibody detects endogenous levels of p21 protein only when phosphorylated at T145.
Formulation :	Liquid in PBS containing 50% glycerol, 0.5% BSA and 0.02% sodium azide.
Source :	Rabbit
Dilution :	Western Blot: 1/500 - 1/2000. Immunohistochemistry: 1/100 - 1/300. ELISA: 1/10000. Not yet tested in other applications.
Purification :	The antibody was affinity-purified from rabbit antiserum by affinity-chromatography using epitope-specific immunogen.
Concentration :	1 mg/ml
Storage_stability	-20°C/1 year
:	
Msds :	MSDS_Antibody.pdf
Other_name :	CDKN1A; CAP20; CDKN1; CIP1; MDA6; PIC1; SDI1; WAF1; Cyclin-dependent kinase inhibitor 1; CDK-interacting protein 1; Melanoma differentiation-associated protein 6; MDA-6; p21



专注二抗产品

Biodragon旗下品牌

Product Images



Western Blot analysis of various cells using Phospho-p21 (T145) Polyclonal Antibody