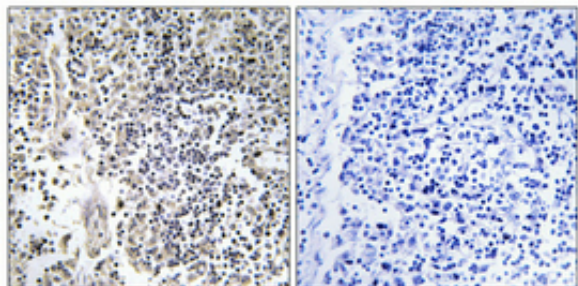


## p47-phox (phospho Ser304) Polyclonal Antibody

Catalog_no :	AP0204
Applications :	WB,IHC-p,ELISA
Reactivity :	Human,Monkey
Category :	抗原抗体
Size :	100µg/50µg/20µg
Gene_name :	NCF1
Protein_name :	Neutrophil cytosol factor 1
Humangene_id :	<a href="#">653361</a>
Humanswissprot_no :	<a href="#">P14598</a>
Immunogen :	The antiserum was produced against synthesized peptide derived from human Neutrophil Cytosol Factor 1 around the phosphorylation site of Ser304. AA range:281-330
Specificity :	Phospho-p47-phox (S304) Polyclonal Antibody detects endogenous levels of p47-phox protein only when phosphorylated at S304.
Formulation :	Liquid in PBS containing 50% glycerol, 0.5% BSA and 0.02% sodium azide.
Source :	Rabbit
Dilution :	Western Blot: 1/500 - 1/2000. Immunohistochemistry: 1/100 - 1/300. ELISA: 1/20000. Not yet tested in other applications.
Purification :	The antibody was affinity-purified from rabbit antiserum by affinity-chromatography using epitope-specific immunogen.
Concentration :	1 mg/ml
Storage_stability :	-20°C/1 year
Msds :	<a href="#">MSDS_Antibody.pdf</a>
Other_name :	NCF1; NOXO2; SH3PXD1A; Neutrophil cytosol factor 1; NCF-1; 47 kDa autosomal chronic granulomatous disease protein; 47 kDa neutrophil oxidase factor; NCF-47K; Neutrophil NADPH oxidase factor 1; Nox organizer 2; Nox-organizing protein 2; SH3
Molecular Weight :	44KD

## Product Images



Immunohistochemical analysis of paraffin-embedded Human lung cancer. Antibody was diluted at 1:100(4°,overnight). High-pressure and temperature Tris-EDTA,pH8.0 was used for antigen retrieval. Negative contrl (right) obtaned from antibody was pre-absorbed by immunogen peptide.