

p53 (phospho Ser20) Polyclonal Antibody

Catalog_no :	AP0206
Applications :	WB,IHC-p,ELISA
Reactivity :	Human,Mouse,Rat,Monkey
Category :	抗原抗体
Size :	100µg/50µg/20µg
Gene_name :	TP53
Protein_name :	Cellular tumor antigen p53
Humangene_id :	7157
Humanswissprot_no :	P04637
Mousegene_id :	22059
Mouseswissprot_no :	P02340
Ratgene_id :	24842
Ratswissprot_no :	P10361
Immunogen :	The antiserum was produced against synthesized peptide derived from human p53 around the phosphorylation site of Ser20. AA range:10-59
Specificity :	Phospho-p53 (S20) Polyclonal Antibody detects endogenous levels of p53 protein only when phosphorylated at S20.
Formulation :	Liquid in PBS containing 50% glycerol, 0.5% BSA and 0.02% sodium azide.
Source :	Rabbit
Dilution :	Western Blot: 1/500 - 1/2000. Immunohistochemistry: 1/100 - 1/300. ELISA: 1/5000. Not yet tested in other applications.
Purification :	The antibody was affinity-purified from rabbit antiserum by affinity-chromatography using epitope-specific immunogen.
Concentration :	1 mg/ml
Storage_stability :	-20°C/1 year

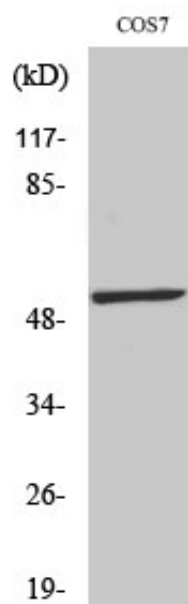


MsdS : [MSDS_Antibody.pdf](#)

Other_name : TP53; P53; Cellular tumor antigen p53; Antigen NY-CO-13; Phosphoprotein p53; Tumor suppressor p53

Molecular Weight : 55KD

Product Images



Western Blot analysis of various cells using Phospho-p53 (S20) Polyclonal Antibody