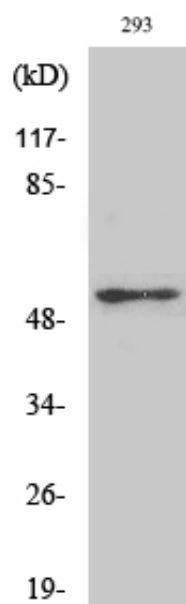




## p53 (phospho Ser315) Polyclonal Antibody

Catalog_no :	AP0207
Applications :	WB,IHC-p,IP,ELISA
Reactivity :	Human
Category :	抗原抗体
Size :	100µg/50µg/20µg
Gene_name :	TP53
Protein_name :	Cellular tumor antigen p53
Humangene_id :	<a href="#">7157</a>
Humanswissprot_no :	<a href="#">P04637</a>
Immunogen :	The antiserum was produced against synthesized peptide derived from human p53 around the phosphorylation site of Ser315. AA range:281-330
Specificity :	Phospho-p53 (S315) Polyclonal Antibody detects endogenous levels of p53 protein only when phosphorylated at S315.
Formulation :	Liquid in PBS containing 50% glycerol, 0.5% BSA and 0.02% sodium azide.
Source :	Rabbit
Dilution :	Western Blot: 1/500 - 1/2000. Immunohistochemistry: 1/100 - 1/300. Immunoprecipitation: 2-5 ug/mg lysate. ELISA: 1/10000. Not yet tested in other applications.
Purification :	The antibody was affinity-purified from rabbit antiserum by affinity-chromatography using epitope-specific immunogen.
Concentration :	1 mg/ml
Storage_stability :	-20°C/1 year
Msds :	<a href="#">MSDS_Antibody.pdf</a>
Other_name :	TP53; P53; Cellular tumor antigen p53; Antigen NY-CO-13; Phosphoprotein p53; Tumor suppressor p53
Molecular Weight :	43KD

## Product Images



Western Blot analysis of various cells using Phospho-p53 (S315) Polyclonal Antibody diluted at 1 : 1000