

p53 (phospho Thr18) Polyclonal Antibody

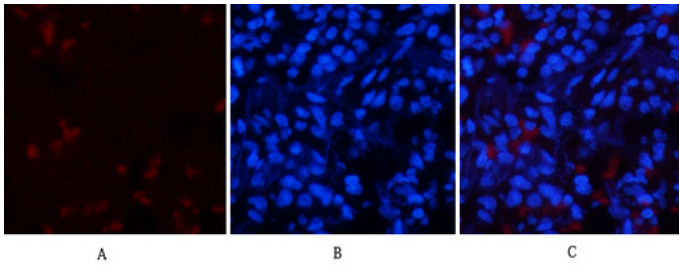
Catalog_no :	AP0212
Applications :	IF,WB,IHC-p,ELISA
Reactivity :	Human,Mouse,Rat
Category :	抗原抗体
Size :	100µg/50µg/20µg
Gene_name :	TP53
Protein_name :	Cellular tumor antigen p53
Humangene_id :	7157
Humanswissprot_no :	P04637
Mousegene_id :	22059
Mouseswissprot_no :	P02340
Ratgene_id :	24842
Ratswissprot_no :	P10361
Immunogen :	The antiserum was produced against synthesized peptide derived from human p53 around the phosphorylation site of Thr18. AA range:1-50
Specificity :	Phospho-p53 (T18) Polyclonal Antibody detects endogenous levels of p53 protein only when phosphorylated at T18.
Formulation :	Liquid in PBS containing 50% glycerol, 0.5% BSA and 0.02% sodium azide.
Source :	Rabbit
Dilution :	IF: 1:50-200 WB 1:500-2000, IHC 1:50-300 IHC 1:50-300
Purification :	The antibody was affinity-purified from rabbit antiserum by affinity-chromatography using epitope-specific immunogen.
Concentration :	1 mg/ml
Storage_stability :	-20°C/1 year
Msds :	MSDS_Antibody.pdf



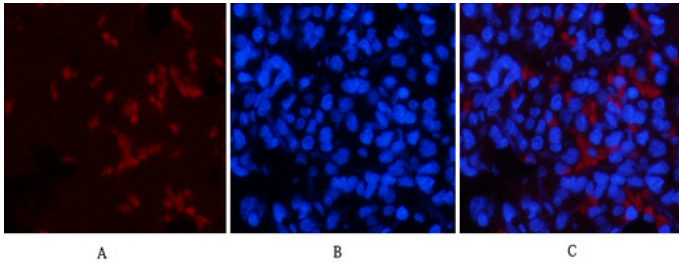
Other_name : TP53; P53; Cellular tumor antigen p53; Antigen NY-CO-13; Phosphoprotein p53; Tumor suppressor p53

Molecular Weight : 46KD

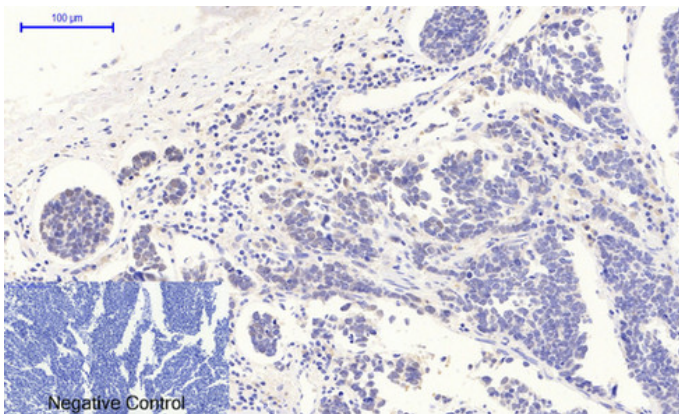
Product Images



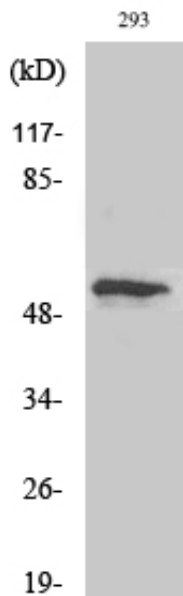
Immunofluorescence analysis of rat-lung tissue. 1,p53 (phospho Thr18) Polyclonal Antibody(red) was diluted at 1:200(4°C,overnight). 2, Cy3 labeled Secondary antibody was diluted at 1:300(room temperature, 50min).3, Picture B: DAPI(blue) 10min. Picture A:Target. Picture B: DAPI. Picture C: merge of A+B



Immunofluorescence analysis of rat-lung tissue. 1,p53 (phospho Thr18) Polyclonal Antibody(red) was diluted at 1:200(4°C,overnight). 2, Cy3 labeled Secondary antibody was diluted at 1:300(room temperature, 50min).3, Picture B: DAPI(blue) 10min. Picture A:Target. Picture B: DAPI. Picture C: merge of A+B

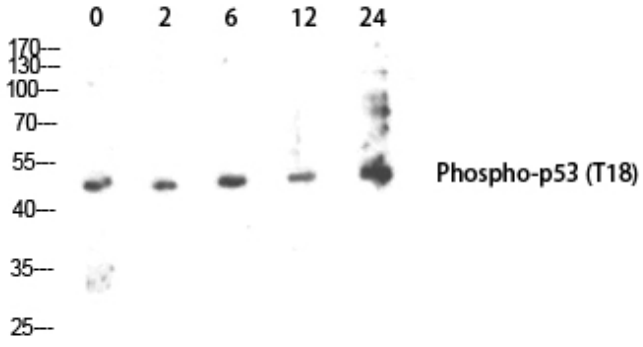


Immunohistochemical analysis of paraffin-embedded Human-lung-cancer tissue. 1,p53 (phospho Thr18) Polyclonal Antibody was diluted at 1:200(4°C,overnight). 2, Sodium citrate pH 6.0 was used for antibody retrieval(>98°C,20min). 3,Secondary antibody was diluted at 1:200(room temperature, 30min). Negative control was used by secondary antibody only.



Western Blot analysis of various cells using Phospho-p53 (T18) Polyclonal Antibody diluted at 1 : 2000

Western Blot analysis of customer's using Phospho-p53 (T18) Polyclonal Antibody. Antibody was diluted at 1:2000



customer's samples:
cell was treated with
drug by
different hour