

p70 S6 kinase α (phospho Ser447) Polyclonal Antibody

| | |
|---------------------|---|
| Catalog_no : | AP0214 |
| Applications : | WB,IHC-p,ELISA |
| Reactivity : | Human,Mouse,Rat |
| Category : | 抗原抗体 |
| Size : | 100 μ g/50 μ g/20 μ g |
| Gene_name : | RPS6KB1 |
| Protein_name : | Ribosomal protein S6 kinase beta-1 |
| Humangene_id : | 6198 |
| Humanswissprot_no : | P23443 |
| Mousegene_id : | 72508 |
| Mouseswissprot_no : | Q8BSK8 |
| Ratgene_id : | 83840 |
| Ratswissprot_no : | P67999 |
| Immunogen : | The antiserum was produced against synthesized peptide derived from human p70 S6 Kinase around the phosphorylation site of Ser424. AA range:414-463 |
| Specificity : | Phospho-p70 S6 kinase α (S447) Polyclonal Antibody detects endogenous levels of p70 S6 kinase α protein only when phosphorylated at S447. |
| Formulation : | Liquid in PBS containing 50% glycerol, 0.5% BSA and 0.02% sodium azide. |
| Source : | Rabbit |
| Dilution : | Western Blot: 1/500 - 1/2000. Immunohistochemistry: 1/100 - 1/300. ELISA: 1/10000. Not yet tested in other applications. |
| Purification : | The antibody was affinity-purified from rabbit antiserum by affinity-chromatography using epitope-specific immunogen. |
| Concentration : | 1 mg/ml |
| Storage_stability : | -20°C/1 year |

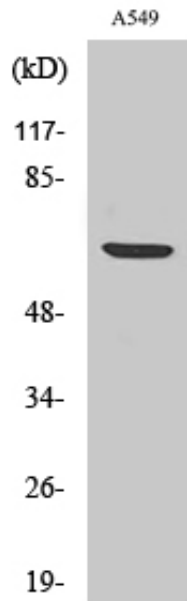


MsdS : [MSDS_Antibody.pdf](#)

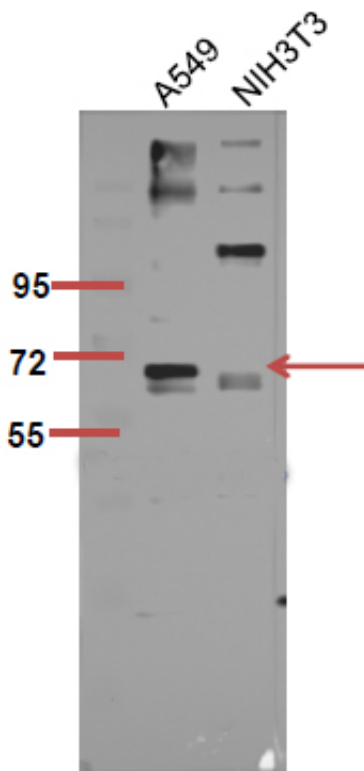
Other_name : [RPS6KB1; STK14A; Ribosomal protein S6 kinase beta-1; S6K-beta-1; S6K1; 70 kDa ribosomal protein S6 kinase 1; P70S6K1; p70-S6K 1; Ribosomal protein S6 kinase I; Serine/threonine-protein kinase 14A; p70 ribosomal S6 kinase alpha; p70 S6 kinas](#)

Molecular Weight : [60KD](#)

Product Images



Western Blot analysis of various cells using Phospho-p70 S6 kinase α (S447) Polyclonal Antibody diluted at 1 : 1000



The picture was kindly provided by our customer, antibody was diluted at 1:500