



p70 S6 kinase α (phospho Thr229) Polyclonal Antibody

Catalog_no :	AP0215
Applications :	WB,IHC-p,IF,ELISA
Reactivity :	Human,Mouse,Rat
Category :	抗原抗体
Size :	100 μ g/50 μ g/20 μ g
Gene_name :	RPS6KB1
Protein_name :	Ribosomal protein S6 kinase beta-1
Humangene_id :	6198
Humanswissprot_no :	P23443
Mousegene_id :	72508
Mouseswissprot_no :	Q8BSK8
Ratgene_id :	83840
Ratswissprot_no :	P67999
Immunogen :	The antiserum was produced against synthesized peptide derived from human p70 S6 Kinase around the phosphorylation site of Thr229. AA range:195-244
Specificity :	Phospho-p70 S6 kinase α (T229) Polyclonal Antibody detects endogenous levels of p70 S6 kinase α protein only when phosphorylated at T229.
Formulation :	Liquid in PBS containing 50% glycerol, 0.5% BSA and 0.02% sodium azide.
Source :	Rabbit
Dilution :	Western Blot: 1/500 - 1/2000. Immunohistochemistry: 1/100 - 1/300. Immunofluorescence: 1/200 - 1/1000. ELISA: 1/5000. Not yet tested in other applications.
Purification :	The antibody was affinity-purified from rabbit antiserum by affinity-chromatography using epitope-specific immunogen.
Concentration :	1 mg/ml
Storage_stability :	-20°C/1 year

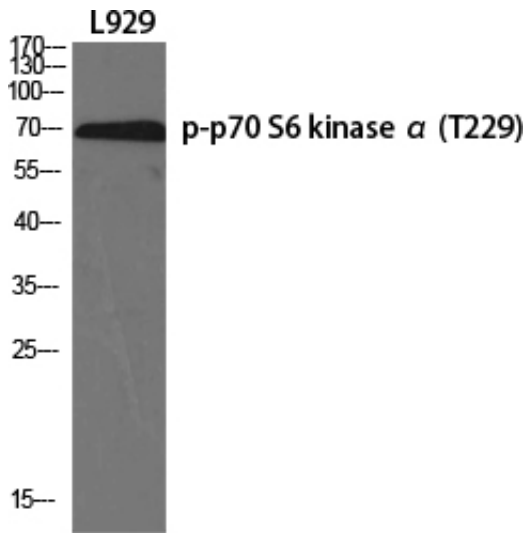


Msd : MSDS_Antibody.pdf

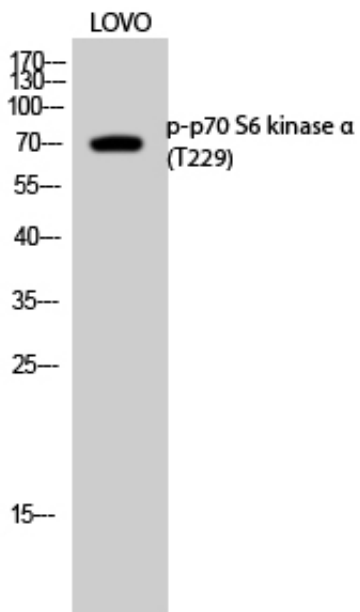
Other_name : RPS6KB1; STK14A; Ribosomal protein S6 kinase beta-1; S6K-beta-1; S6K1; 70 kDa ribosomal protein S6 kinase 1; P70S6K1; p70-S6K 1; Ribosomal protein S6 kinase I; Serine/threonine-protein kinase 14A; p70 ribosomal S6 kinase alpha; p70 S6 kinas

Molecular Weight : 60KD

Product Images



Western Blot analysis of various cells using Phospho-p70 S6 kinase α (T229) Polyclonal Antibody diluted at 1 : 500



Western Blot analysis of LOVO cells using Phospho-p70 S6 kinase α (T229) Polyclonal Antibody diluted at 1 : 500