

p70 S6 kinase  $\alpha$  (phospho Thr421) Polyclonal Antibody

Catalog_no :	AP0216
Applications :	WB,IHC-p,ELISA
Reactivity :	Human,Mouse,Rat
Category :	抗原抗体
Size :	100 $\mu$ g/50 $\mu$ g/20 $\mu$ g
Gene_name :	RPS6KB1
Protein_name :	Ribosomal protein S6 kinase beta-1
Humangene_id :	<a href="#">6198</a>
Humanswissprot_no :	<a href="#">P23443</a>
Mousegene_id :	<a href="#">72508</a>
Mouseswissprot_no :	<a href="#">Q8BSK8</a>
Ratgene_id :	<a href="#">83840</a>
Ratswissprot_no :	<a href="#">P67999</a>
Immunogen :	Synthesized phospho-peptide around the phosphorylation site of human p70 S6 kinase $\alpha$ (phospho Thr421)
Specificity :	Phospho-p70 S6 kinase $\alpha$ (T421) Polyclonal Antibody detects endogenous levels of p70 S6 kinase $\alpha$ protein only when phosphorylated at T421.
Formulation :	Liquid in PBS containing 50% glycerol, 0.5% BSA and 0.02% sodium azide.
Source :	Rabbit
Dilution :	Western Blot: 1/500 - 1/2000. Immunohistochemistry: 1/100 - 1/300. ELISA: 1/10000. Not yet tested in other applications.
Purification :	The antibody was affinity-purified from rabbit antiserum by affinity-chromatography using epitope-specific immunogen.
Concentration :	1 mg/ml
Storage_stability :	-20°C/1 year

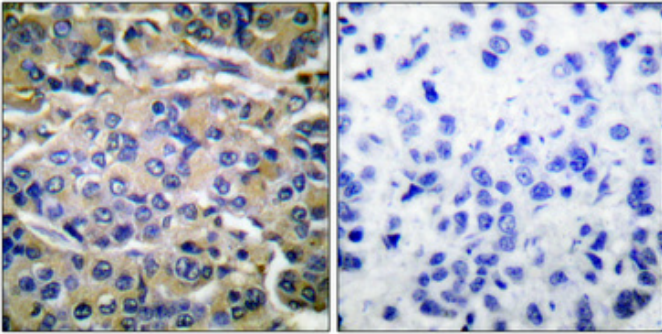


MsdS : [MSDS\\_Antibody.pdf](#)

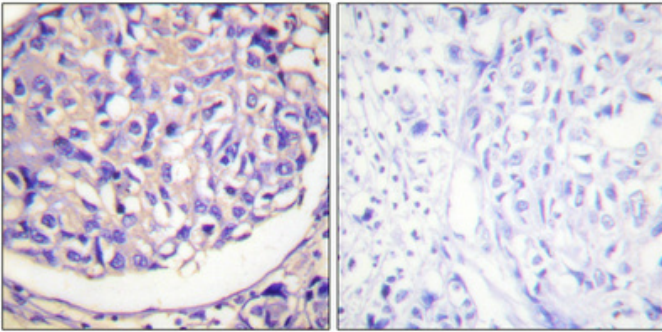
Other\_name : [RPS6KB1; STK14A; Ribosomal protein S6 kinase beta-1; S6K-beta-1; S6K1; 70 kDa ribosomal protein S6 kinase 1; P70S6K1; p70-S6K 1; Ribosomal protein S6 kinase I; Serine/threonine-protein kinase 14A; p70 ribosomal S6 kinase alpha; p70 S6 kinas](#)

Molecular Weight : [70KD](#)

## Product Images



Immunohistochemical analysis of paraffin-embedded Human breast cancer. Antibody was diluted at 1:100(4°,overnight). High-pressure and temperature Tris-EDTA,pH8.0 was used for antigen retrieval. Negative contrl (right) obtaned from antibody was pre-absorbed by immunogen peptide.



Immunohistochemical analysis of paraffin-embedded Human breast cancer. Antibody was diluted at 1:100(4°,overnight). High-pressure and temperature Tris-EDTA,pH8.0 was used for antigen retrieval. Negative contrl (right) obtaned from antibody was pre-absorbed by immunogen peptide.