

Paxillin (phospho Tyr118) Polyclonal Antibody

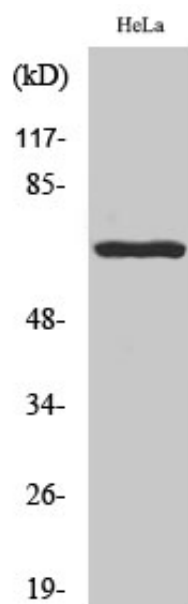
Catalog_no :	AP0219
Applications :	WB,ELISA
Reactivity :	Human,Mouse,Rat
Category :	抗原抗体
Size :	100µg/50µg/20µg
Gene_name :	PXN
Protein_name :	Paxillin
Humangene_id :	5829
Humanswissprot_no :	P49023
Mousegene_id :	19303
Mouseswissprot_no :	Q8VI36
Ratgene_id :	360820
Ratswissprot_no :	Q66H76
Immunogen :	The antiserum was produced against synthesized peptide derived from human Paxillin around the phosphorylation site of Tyr118. AA range:85-134
Specificity :	Phospho-Paxillin (Y118) Polyclonal Antibody detects endogenous levels of Paxillin protein only when phosphorylated at Y118.
Formulation :	Liquid in PBS containing 50% glycerol, 0.5% BSA and 0.02% sodium azide.
Source :	Rabbit
Dilution :	Western Blot: 1/500 - 1/2000. ELISA: 1/10000. Not yet tested in other applications.
Purification :	The antibody was affinity-purified from rabbit antiserum by affinity-chromatography using epitope-specific immunogen.
Concentration :	1 mg/ml
Storage_stability :	-20°C/1 year
Msds :	MSDS_Antibody.pdf



Other_name : PXN; Paxillin

Molecular Weight : 64KD

Product Images



Western Blot analysis of various cells using Phospho-Paxillin (Y118) Polyclonal Antibody