

## Paxillin (phospho Tyr31) Polyclonal Antibody

Catalog_no :	AP0220
Applications :	WB,IHC-p,ELISA
Reactivity :	Human,Mouse,Rat
Category :	抗原抗体
Size :	100µg/50µg/20µg
Gene_name :	PXN
Protein_name :	Paxillin
Humangene_id :	<a href="#">5829</a>
Humanswissprot_no :	<a href="#">P49023</a>
Mousegene_id :	<a href="#">19303</a>
Mouseswissprot_no :	<a href="#">Q8VI36</a>
Ratgene_id :	<a href="#">360820</a>
Ratswissprot_no :	<a href="#">Q66H76</a>
Immunogen :	The antiserum was produced against synthesized peptide derived from human Paxillin around the phosphorylation site of Tyr31. AA range:15-64
Specificity :	Phospho-Paxillin (Y31) Polyclonal Antibody detects endogenous levels of Paxillin protein only when phosphorylated at Y31.
Formulation :	Liquid in PBS containing 50% glycerol, 0.5% BSA and 0.02% sodium azide.
Source :	Rabbit
Dilution :	Western Blot: 1/500 - 1/2000. Immunohistochemistry: 1/100 - 1/300. ELISA: 1/20000. Not yet tested in other applications.
Purification :	The antibody was affinity-purified from rabbit antiserum by affinity-chromatography using epitope-specific immunogen.
Concentration :	1 mg/ml
Storage_stability :	-20°C/1 year

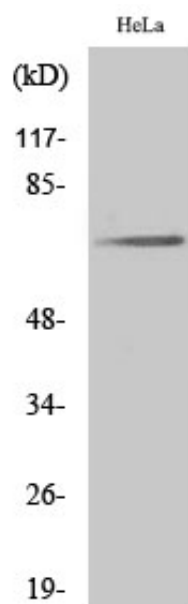


Msd : MSDS\_Antibody.pdf

Other\_name : PXN; Paxillin

Molecular Weight : 68KD

## Product Images



Western Blot analysis of various cells using Phospho-Paxillin (Y31) Polyclonal Antibody diluted at 1 : 1000