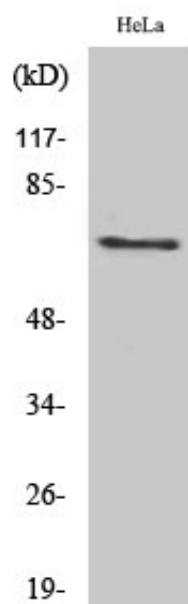


Paxillin (phospho Tyr88) Polyclonal Antibody

Catalog_no :	AP0221
Applications :	WB,IHC-p,ELISA
Reactivity :	Human
Category :	抗原抗体
Size :	100µg/50µg/20µg
Gene_name :	PXN
Protein_name :	Paxillin
Humangene_id :	5829
Humanswissprot_no :	P49023
Immunogen :	Synthesized phospho-peptide around the phosphorylation site of human Paxillin (phospho Tyr88)
Specificity :	Phospho-Paxillin (Y88) Polyclonal Antibody detects endogenous levels of Paxillin protein only when phosphorylated at Y88.
Formulation :	Liquid in PBS containing 50% glycerol, 0.5% BSA and 0.02% sodium azide.
Source :	Rabbit
Dilution :	Western Blot: 1/500 - 1/2000. Immunohistochemistry: 1/100 - 1/300. ELISA: 1/10000. Not yet tested in other applications.
Purification :	The antibody was affinity-purified from rabbit antiserum by affinity-chromatography using epitope-specific immunogen.
Concentration :	1 mg/ml
Storage_stability :	-20°C/1 year
Msds :	MSDS_Antibody.pdf
Other_name :	PXN; Paxillin
Molecular Weight :	68KD

Product Images



Western Blot analysis of various cells using Phospho-Paxillin (Y88) Polyclonal Antibody