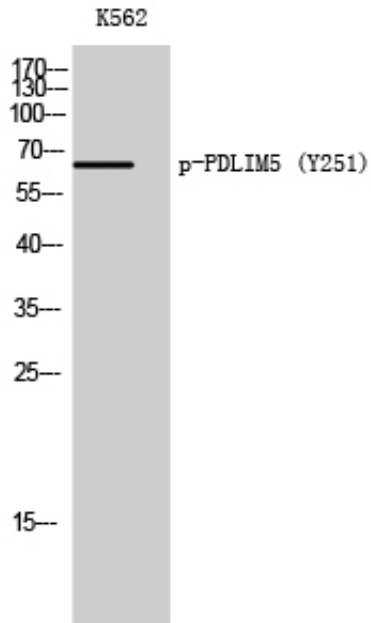


PDLIM5 (phospho Tyr251) Polyclonal Antibody

Catalog_no :	AP0223
Applications :	WB,ELISA
Reactivity :	Human
Category :	抗原抗体
Size :	100µg/50µg/20µg
Gene_name :	PDLIM5
Protein_name :	PDZ and LIM domain protein 5
Humangene_id :	10611
Humanswissprot_no :	Q96HC4
Immunogen :	Synthesized phospho-peptide around the phosphorylation site of human PDLIM5 (phospho Tyr251)
Specificity :	Phospho-PDLIM5 (Y251) Polyclonal Antibody detects endogenous levels of PDLIM5 protein only when phosphorylated at Y251.
Formulation :	Liquid in PBS containing 50% glycerol, 0.5% BSA and 0.02% sodium azide.
Source :	Rabbit
Dilution :	Western Blot: 1/500 - 1/2000. ELISA: 1/10000. Not yet tested in other applications.
Purification :	The antibody was affinity-purified from rabbit antiserum by affinity-chromatography using epitope-specific immunogen.
Concentration :	1 mg/ml
Storage_stability :	-20°C/1 year
Msds :	MSDS_Antibody.pdf
Other_name :	PDLIM5; ENH; L9; PDZ and LIM domain protein 5; Enigma homolog; Enigma-like PDZ and LIM domains protein
Molecular Weight :	64KD

Product Images



Western Blot analysis of K562 cells using Phospho-PDLIM5 (Y251) Polyclonal Antibody