

## PKC (phospho Thr497) Polyclonal Antibody

Catalog_no :	AP0227
Applications :	WB,IHC-p,IF,ELISA
Reactivity :	Human,Mouse,Rat
Category :	抗原抗体
Size :	100µg/50µg/20µg
Gene_name :	PRKCA/PRKCB/PRKCD/PRKCE/PRKCG/PRKCH/PRKCQ/PRKCZ
Protein_name :	Protein kinase C alpha type/Protein kinase C beta type/Protein kinase C delta type/Protein kinase C epsilon type/Protein kinase C gamma type/Protein kinase C eta type/Protein kinase C theta type/Protein kinase C zeta type
Humangene_id :	<a href="#">5578/5579/5580/5581/5582/5583/5588/5590</a>
Humanswissprot_no :	<a href="#">P17252/P05771/Q05655/Q02156/P05129/P24723/Q04759/Q05513</a>
Mousegene_id :	<a href="#">18750/18751/18753/18754</a>
Ratgene_id :	<a href="#">25023/170538/29340</a>
Ratswissprot_no :	<a href="#">P05696/P68403/P09215/P09216</a>
Immunogen :	The antiserum was produced against synthesized peptide derived from human PKC-pan around the phosphorylation site of Thr497. AA range:623-672
Specificity :	Phospho-PKC (T497) Polyclonal Antibody detects endogenous levels of PKC protein only when phosphorylated at T497.
Formulation :	Liquid in PBS containing 50% glycerol, 0.5% BSA and 0.02% sodium azide.
Source :	Rabbit
Dilution :	Western Blot: 1/500 - 1/2000. Immunohistochemistry: 1/100 - 1/300. Immunofluorescence: 1/200 - 1/1000. ELISA: 1/40000. Not yet tested in other applications.
Purification :	The antibody was affinity-purified from rabbit antiserum by affinity-chromatography using epitope-specific immunogen.
Concentration :	1 mg/ml
Storage_stability :	-20°C/1 year

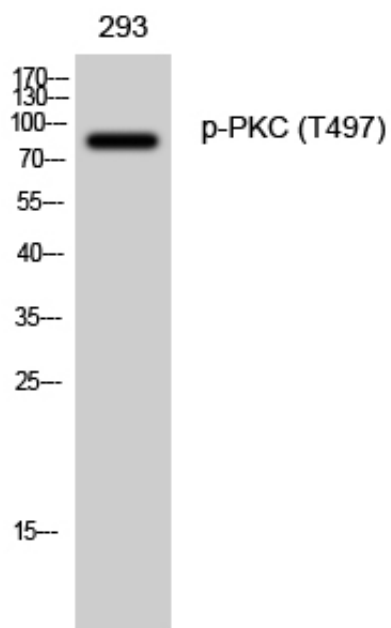


Msd : [MSDS\\_Antibody.pdf](#)

Other\_name : PRKCA; PKCA; PRKACA; Protein kinase C alpha type; PKC-A; PKC-alpha; PRKCB; PKCB; PRKCB1; Protein kinase C beta type; PKC-B; PKC-beta; PRKCD; Protein kinase C delta type; Tyrosine-protein kinase PRKCD; nPKC-delta; PRKCE; PKCE; Protein kinase

Molecular Weight : 83KD

## Product Images



Western Blot analysis of 293 cells using Phospho-PKC (T497) Polyclonal Antibody diluted at 1 : 500