

PKC δ (phospho Thr507) Polyclonal Antibody

Catalog_no :	AP0228
Applications :	WB,IHC-p,ELISA
Reactivity :	Human,Mouse,Rat
Category :	抗原抗体
Size :	100 μ g/50 μ g/20 μ g
Gene_name :	PRKCD
Protein_name :	Protein kinase C delta type
Humangene_id :	5580
Humanswissprot_no :	Q05655
Mousegene_id :	18753
Mouseswissprot_no :	P28867
Ratgene_id :	170538
Ratswissprot_no :	P09215
Immunogen :	The antiserum was produced against synthesized peptide derived from human PKC delta around the phosphorylation site of Thr505. AA range:471-520
Specificity :	Phospho-PKC δ (T507) Polyclonal Antibody detects endogenous levels of PKC δ protein only when phosphorylated at T507.
Formulation :	Liquid in PBS containing 50% glycerol, 0.5% BSA and 0.02% sodium azide.
Source :	Rabbit
Dilution :	Western Blot: 1/500 - 1/2000. Immunohistochemistry: 1/100 - 1/300. ELISA: 1/20000. Not yet tested in other applications.
Purification :	The antibody was affinity-purified from rabbit antiserum by affinity-chromatography using epitope-specific immunogen.
Concentration :	1 mg/ml
Storage_stability :	-20°C/1 year

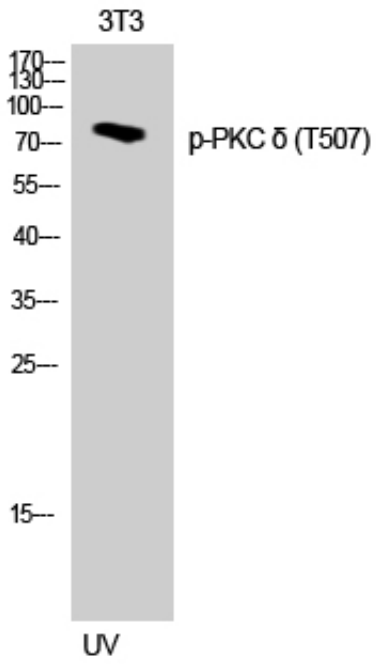


Msd : MSDS_Antibody.pdf

Other_name : PRKCD; Protein kinase C delta type; Tyrosine-protein kinase PRKCD; nPKC-delta

Molecular Weight : 78KD

Product Images



Western Blot analysis of 3T3 cells using Phospho-PKC δ (T507) Polyclonal Antibody