

PKC  $\zeta$  (phospho Thr410) Polyclonal Antibody

Catalog_no :	AP0229
Applications :	WB,IHC-p,IF,ELISA
Reactivity :	Human,Mouse,Rat
Category :	抗原抗体
Size :	100 $\mu$ g/50 $\mu$ g/20 $\mu$ g
Gene_name :	PRKCZ
Protein_name :	Protein kinase C zeta type
Humangene_id :	<a href="#">5590</a>
Humanswissprot_no :	<a href="#">Q05513</a>
Mousegene_id :	<a href="#">18762</a>
Mouseswissprot_no :	<a href="#">Q02956</a>
Ratgene_id :	<a href="#">25522</a>
Ratswissprot_no :	<a href="#">P09217</a>
Immunogen :	The antiserum was produced against synthesized peptide derived from human PKC zeta around the phosphorylation site of Thr410. AA range:376-425
Specificity :	Phospho-PKC $\zeta$ (T410) Polyclonal Antibody detects endogenous levels of PKC $\zeta$ protein only when phosphorylated at T410.
Formulation :	Liquid in PBS containing 50% glycerol, 0.5% BSA and 0.02% sodium azide.
Source :	Rabbit
Dilution :	Western Blot: 1/500 - 1/2000. Immunohistochemistry: 1/100 - 1/300. Immunofluorescence: 1/200 - 1/1000. ELISA: 1/20000. Not yet tested in other applications.
Purification :	The antibody was affinity-purified from rabbit antiserum by affinity-chromatography using epitope-specific immunogen.
Concentration :	1 mg/ml
Storage_stability :	-20°C/1 year

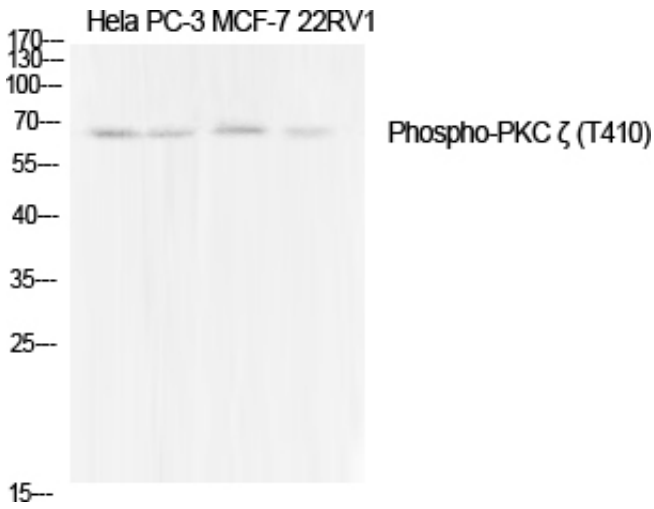


Msd : MSDS\_Antibody.pdf

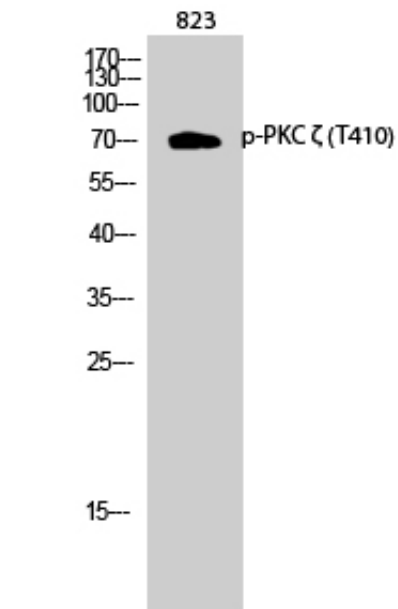
Other\_name : PRKCZ; PKC2; Protein kinase C zeta type; nPKC-zeta

Molecular Weight : 70KD

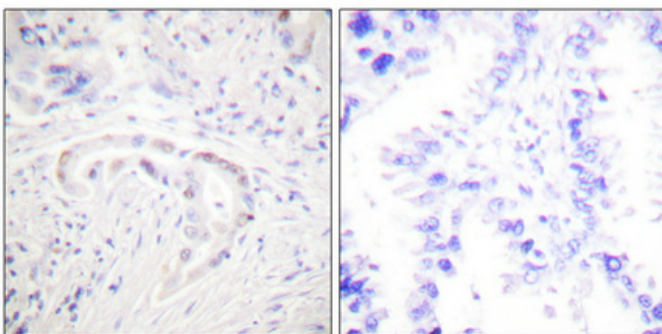
## Product Images



Western Blot analysis of various cells using Phospho-PKC  $\zeta$  (T410) Polyclonal Antibody diluted at 1 : 1000



Western Blot analysis of 823 cells using Phospho-PKC  $\zeta$  (T410) Polyclonal Antibody diluted at 1 : 1000



Immunohistochemical analysis of paraffin-embedded Human lung cancer. Antibody was diluted at 1:100(4°,overnight). High-pressure and temperature Tris-EDTA,pH8.0 was used for antigen retrieval. Negative contrl (right) obtained from antibody was pre-absorbed by immunogen peptide.