

## Pragmin (phospho Tyr413) Polyclonal Antibody

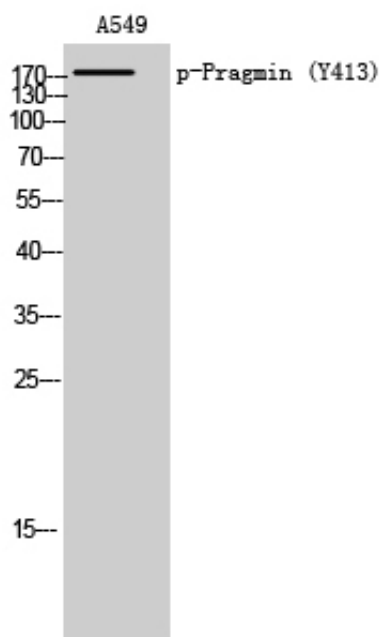
Catalog_no :	AP0236
Applications :	WB,IHC-p,ELISA
Reactivity :	Human,Mouse,Rat
Category :	抗原抗体
Size :	100µg/50µg/20µg
Gene_name :	SGK223
Protein_name :	Tyrosine-protein kinase SgK223
Humangene_id :	<a href="#">157285</a>
Humanswissprot_no :	<a href="#">Q86YV5</a>
Mousegene_id :	<a href="#">244418</a>
Mouseswissprot_no :	<a href="#">Q571I4</a>
Immunogen :	Synthesized phospho-peptide around the phosphorylation site of human Pragmin (phospho Tyr413)
Specificity :	Phospho-Pragmin (Y413) Polyclonal Antibody detects endogenous levels of Pragmin protein only when phosphorylated at Y413.
Formulation :	Liquid in PBS containing 50% glycerol, 0.5% BSA and 0.02% sodium azide.
Source :	Rabbit
Dilution :	Western Blot: 1/500 - 1/2000. Immunohistochemistry: 1/100 - 1/300. ELISA: 1/10000. Not yet tested in other applications.
Purification :	The antibody was affinity-purified from rabbit antiserum by affinity-chromatography using epitope-specific immunogen.
Concentration :	1 mg/ml
Storage_stability :	-20°C/1 year
Msds :	<a href="#">MSDS_Antibody.pdf</a>
Other_name :	SGK223; Tyrosine-protein kinase SgK223; Sugen kinase 223
Molecular	175KD



Weight :

---

## Product Images



Western Blot analysis of A549 cells using Phospho-Pragmin (Y413) Polyclonal Antibody