

## PTEN (phospho Ser370) Polyclonal Antibody

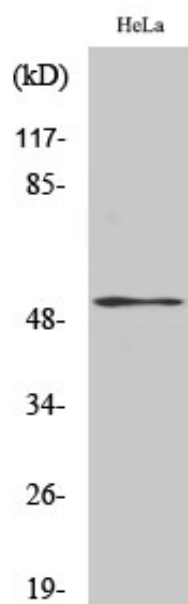
Catalog_no :	AP0237
Applications :	WB,IHC-p,ELISA
Reactivity :	Human,Mouse,Rat
Category :	抗原抗体
Size :	100µg/50µg/20µg
Gene_name :	PTEN
Protein_name :	Phosphatidylinositol 3,4,5-trisphosphate 3-phosphatase and dual-specificity protein phosphatase PTEN
Humangene_id :	<a href="#">5728</a>
Humanswissprot_no :	<a href="#">P60484</a>
Mousegene_id :	<a href="#">19211</a>
Mouseswissprot_no :	<a href="#">O08586</a>
Immunogen :	The antiserum was produced against synthesized peptide derived from human PTEN around the phosphorylation site of Ser370. AA range:355-385
Specificity :	Phospho-PTEN (S370) Polyclonal Antibody detects endogenous levels of PTEN protein only when phosphorylated at S370.
Formulation :	Liquid in PBS containing 50% glycerol, 0.5% BSA and 0.02% sodium azide.
Source :	Rabbit
Dilution :	Western Blot: 1/500 - 1/2000. Immunohistochemistry: 1/100 - 1/300. ELISA: 1/5000. Not yet tested in other applications.
Purification :	The antibody was affinity-purified from rabbit antiserum by affinity-chromatography using epitope-specific immunogen.
Concentration :	1 mg/ml
Storage_stability :	-20°C/1 year
Msds :	<a href="#">MSDS_Antibody.pdf</a>
Other_name :	PTEN; MMAC1; TEP1; Phosphatidylinositol 3; 4,5-trisphosphate 3-phosphatase and dual-specificity protein phosphatase PTEN; Mutated in multiple advanced cancers 1;



Phosphatase and tensin homolog

---

## Product Images



Western Blot analysis of various cells using Phospho-PTEN (S370) Polyclonal Antibody